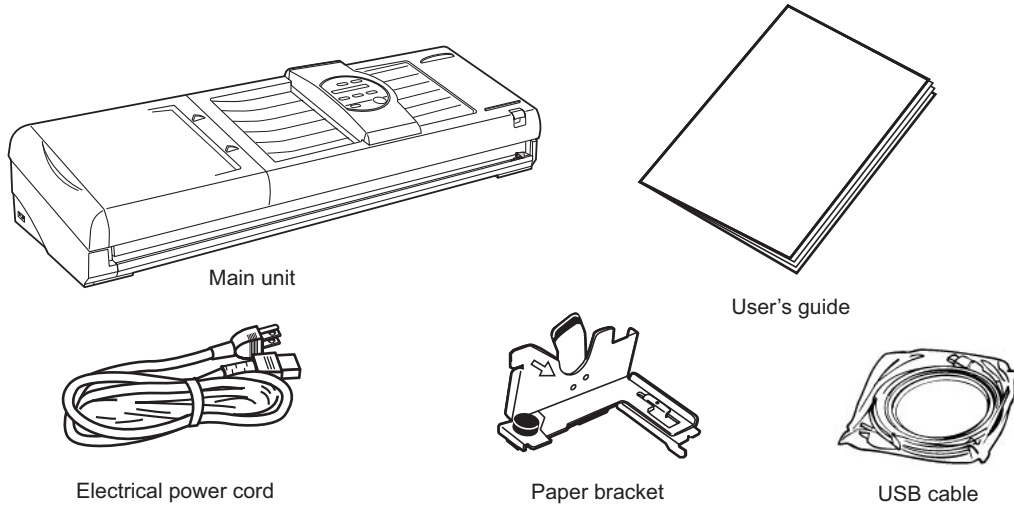


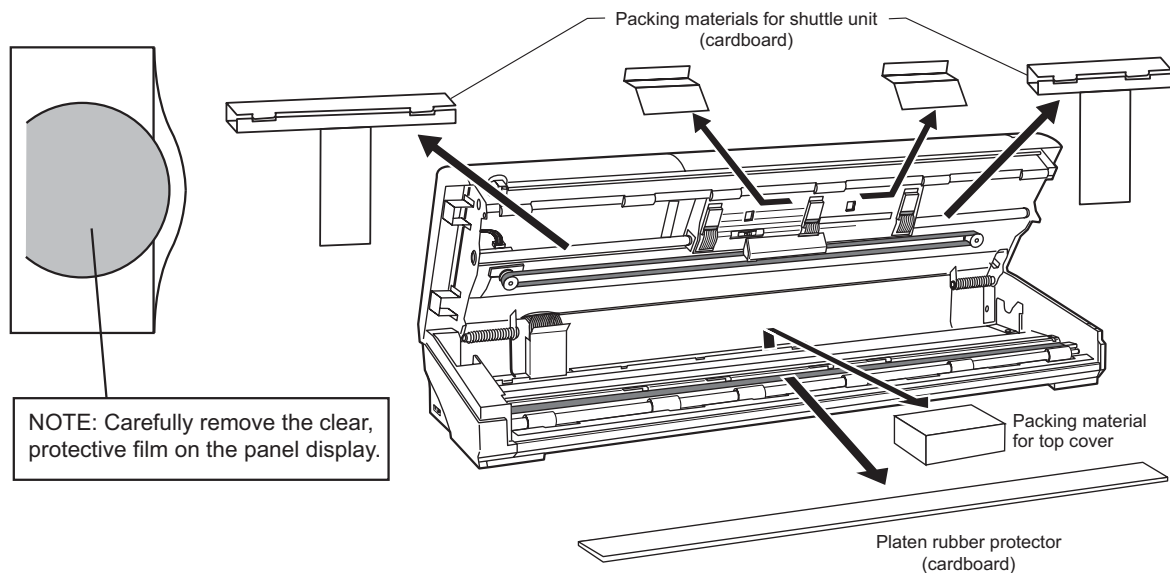
Unpacking and setting up the printer

Items included in the package

Verify that all of the following items have been included in the Poster Maker box.



Unpacking the printer



NOTE: Carefully remove the clear, protective film on the panel display.

Caution

Before turning the printer on, be sure to remove the cardboard protecting the shuttle unit and the platen rubber protector.

Save the box and packing materials for future use. When moving or shipping the printer, carefully insert the packing materials to prevent damage to the system.