

VariQuest™

Cold Laminator 2510



Varitronics™
A Brady Business  BRADY

User's Guide

Warranty Information

Varitronic Systems, Inc. warrants the equipment and accessories comprising the Varitronics[®] Cold Laminator 2510 will be free of defects in material and workmanship under normal use for one (1) year from the date of customer purchase and that supplies for the system will be free of defects in materials and workmanship for one (1) year from the date of customer purchase.

Varitronics[®] will, at its option, repair, replace, or refund the purchase price of any accessories, supplies, or equipment found to be defective under this warranty.

THIS WARRANTY IS EXPRESSLY IN LIEU OF ALL OTHER WARRANTIES, INCLUDING BUT NOT LIMITED TO ANY IMPLIED WARRANTY OF MERCHANTABILITY OR WARRANTY OR FITNESS FOR A PARTICULAR PURPOSE.

In the event of breach of this express warranty, or any other warranty, whether expressed or implied Varitronics[®] liability shall be limited to the remedy provided by the preceding paragraph.

IN NO EVENT WILL VARITRONICS[®] EVER BE LIABLE FOR ANY DIRECT, INCIDENTAL, OR CONSEQUENTIAL, WHETHER EXPRESS OR IMPLIED, INCLUDING ANY IMPLIED WARRANTY OR THE MERCHANTABILITY OR FITNESS, IN AN AMOUNT GREATER THAN THE PURCHASE PRICE OF THE PRODUCTS DESCRIBED BY THIS EXPRESS WARRANTY.

No agent, distributor, salesperson, wholesale or retail dealer has authority to bind Varitronics[®] to any other affirmation, representation or warranty concerning these goods.



2355 Polaris Lane North
Suite 100
Plymouth, MN 55447
1-800-328-0585
www.variquest.com

© 2011 All Rights Reserved.
4326_Rev B

Contents

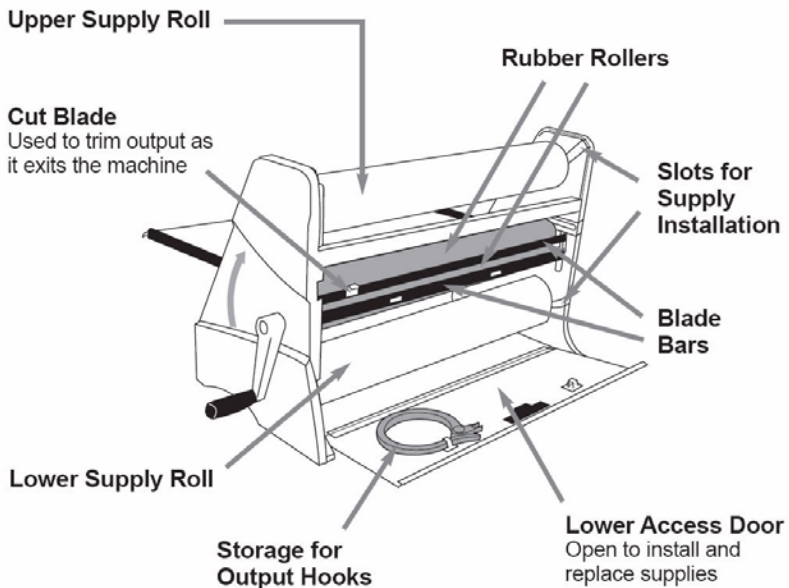
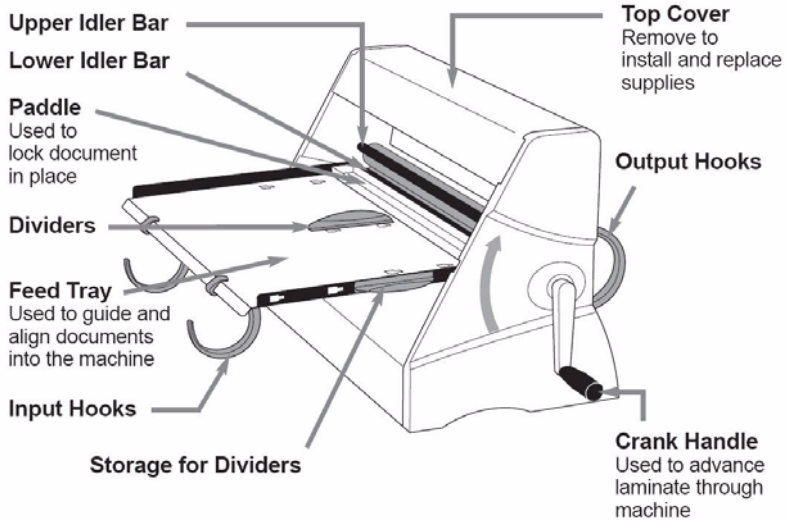
Introduction	1
Features and Functions	2
Assembly Instructions	3
Load Supply	4
Basic Operation	7
Remove Supply Roll	9
Using Input Hooks	11
Divider Positions	12
Using Output Hooks	13
Maintenance, Safeguards & Tips	14
Product Specifications	16
Troubleshooting	17

Introduction

Quickly and easily protect and preserve posters, banners, artwork and more with the VariQuest[®] Cold Laminator 2510. Laminate documents up to 25" wide without the need for electricity or heat. It is the perfect compliment to the VariQuest[®].

Cutout Maker with the ability to laminate standard sizes of construction paper. The laminate edges won't separate when cutting shapes, fonts and collections on the Cutout Maker, allowing students and staff to use the cutouts again and again.

Features and Functions



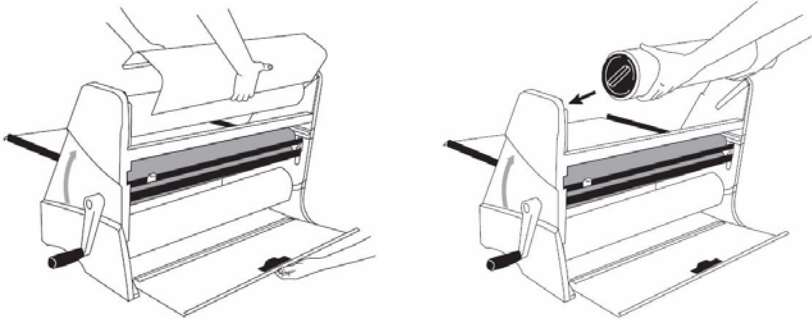
Assembly Instructions

1. Place the crank handle assembly onto the D-shaped roller shaft with the set screw facing upward.
2. Move the handle forward on the D-shaped shaft until it stops.
3. Use the hex wrench to secure the set screw.



Load Supply

1. Remove the top cover of the machine by lifting upward.
2. Grasp the handle on the lower access door and pull to open.
3. Match the colored end of each supply roll with the corresponding markings on the side of the machine.
4. Note which roll is identified as “top” and “bottom”.
5. Slide the supply rolls into the slots in the sides of the machine, making certain that the roll is inserted completely.



6. Route material:
 - a. On the lower supply roll, grasp the laminated starter section by the leading edge.
 - b. Route over the lower idler bar adjacent to the lower rubber roller.
 - c. Make sure the supply is inserted squarely.
 - d. Rotate the crank handle 1/4 turn in the direction of the arrow.
7. Remove slack:
 - a. Make sure the lower supply roll is tight. If necessary, rotate the lower supply roll in the direction of the arrow until all slack is removed.
 - b. Grasp the supply from the upper roll and adhere it to the lower supply roll.
 - c. By carefully aligning the edges, keeping the supply tight and avoiding wrinkles, supply waste will be minimized.

8. Test material:

- a. Rotate the crank handle to pull the supply through the machine.
- b. Ensure that the supply exits between the blade bars.
- c. Just before the upper supply roll becomes tight again, insert a small piece of cardstock between the rubber rollers. This will help minimize waste and ensure the supply exits between the blade bars.



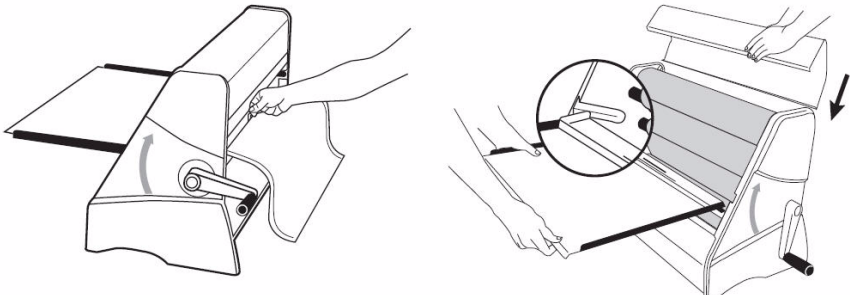
9. Align and trim material:

- a. Continue to crank supply through the machine until it is aligned and wrinkle-free.
- b. Trim off excess supply by pressing down on the cut blade and sliding in either direction.

10. Replace cover, install feed tray:

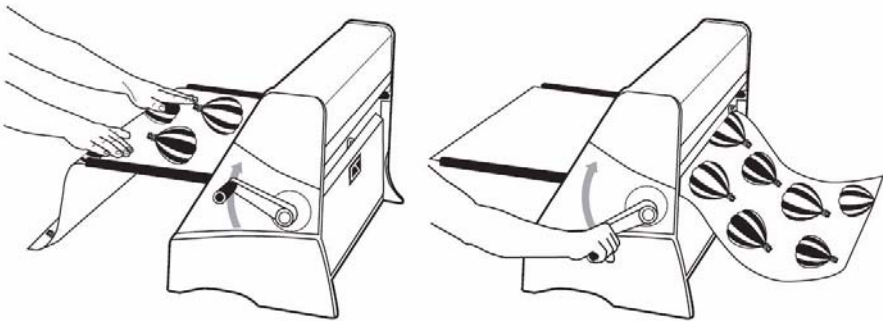
- a. Replace the top cover.
- b. Close the lower access door.
- c. Install feed tray completely by aligning the support posts in the slots located in the sides of the machine.

Note: When installed correctly, the supply layers should be aligned and wrinkle-free after 18" (45cm) of supply has exited the machine.



Basic Operation

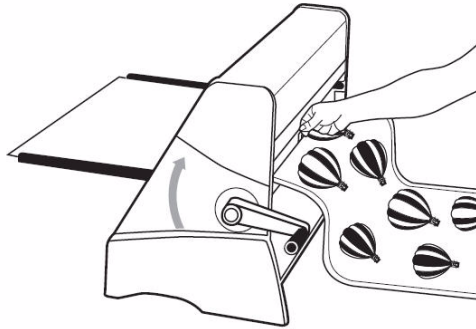
1. Insert material:
 - a. Pull back on the paddle so that it is in the “up” position.
 - b. Insert a document so the leading edge is under the paddle. The document should extend past the edge of the paddle 1-2 inches (2.5 - 5cm).
 - c. Align the document parallel to the edge of the feeder tray.
2. Laminate material:
 - a. Push paddle forward into “down” position to lock the document in place.
 - b. Ensure that the leading edge of the document is adhered down evenly. If necessary, slide your fingers across the leading edge to secure it in place.
 - c. Turn the crank handle clockwise to advance the document through the machine.



3. Trim Document:

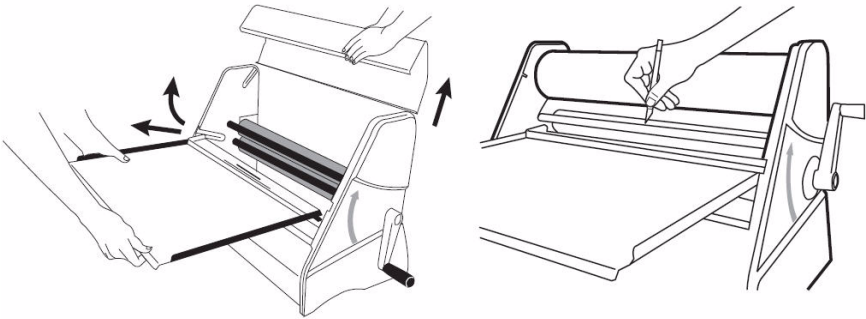
- a. Trim the document by pressing down on the cut blade and sliding it in either direction.

Note: As the document exits the machine, you may wish to trim the leading edge. This will avoid a later trimming operation.

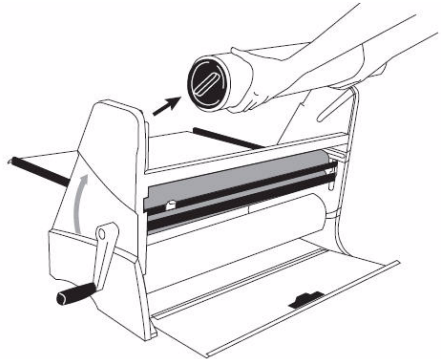
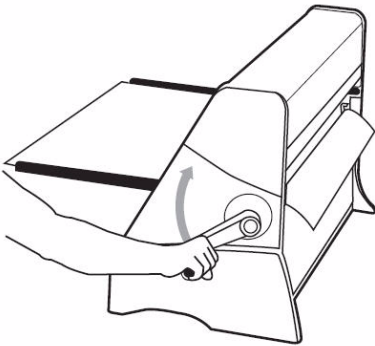


Remove Supply Roll

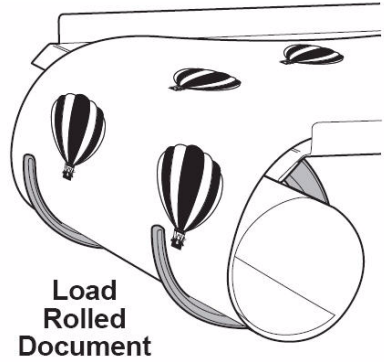
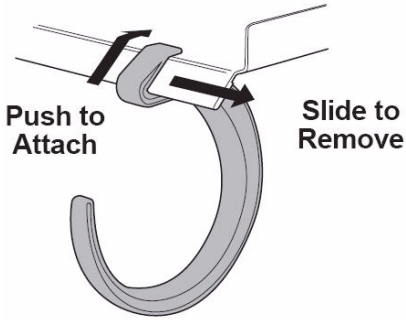
1. Remove supply roll:
 - a. Remove the top cover by lifting upward.
 - b. Remove the feed tray by lifting and pulling away from the machine.
 - c. Remove output hooks by pulling away from the machine.
2. Cut supply roll:
 - a. Make a small hole with a knife about one inch (2.54cm) from the left edge of the supply.
 - b. Slide the knife towards the right edge of the supply and stop about one inch (2.54cm) from the edge.
 - c. Use caution to avoid cutting into the rubber rollers.



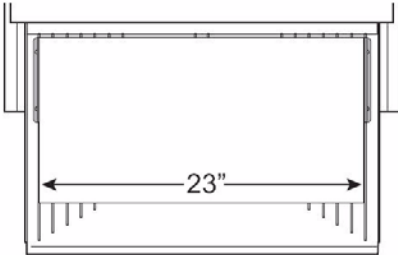
3. Turn the crank handle 1/2 turn maximum in the direction of the arrow. This will cause the uncut supply at the edges to break, creating a laminated leader for easy installation at a later time.
4. Remove the supply rolls from the machine. We recommend that supplies are stored laying flat in a cool, dry place using the original packaging.



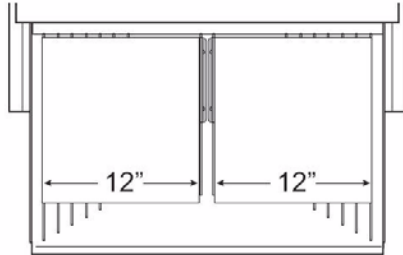
Using Input Hooks



Divider Positions

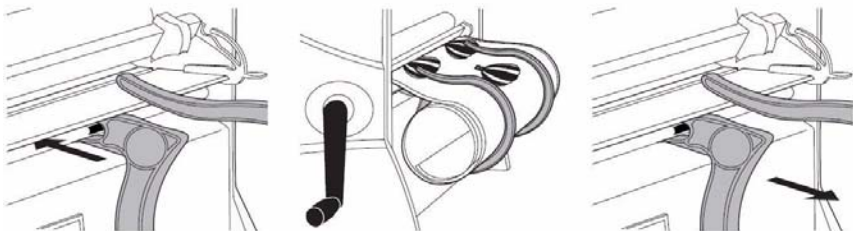


Dividers in Outer Position



Dividers in Center Position

Using Output Hooks



Note: Lower access door must be closed and output hooks should align with markings.

Maintenance, Safeguards & Tips

When properly used, the VariQuest® Cold Laminator 2510 is relatively maintenancefree. Listed below are safeguards and tips that will produce better results.

Importance of a clean document

For best results when laminating, it is highly recommended that the document be cleaned with a soft, lint-free cloth immediately prior to lamination. Small dust or lint particles may cause the laminate to “tent”, producing an appearance similar to a small air bubble.

Cut blade replacement and cleaning

The cut blade may accumulate adhesive over time. Cleaning the blade must be done with great care to avoid personal injury. To remove the blade, remove blade bars and gently tap or wiggle the plastic end piece off. Carefully slide the cut blade off the blade bars. Replace or clean with light solvent such as isopropyl alcohol. Carefully slide on new or cleaned cut blade, gently tap the plastic end piece on, and replace blade bars.

Use after storage

For applications where the appearance of your document is critical, it is highly recommended that the VariQuest® Cold Laminator 2510 be used and stored in a clean, dust-free environment. Airborne dust particles and lint will tend to adhere to the bare adhesive inside the supply roll. If the machine has not been used for several days or was subject to a dusty environment, it is recommended that four inches (10cm) of supply be advanced and discarded before inserting your document. It is also recommended that the feed tray is cleaned with a lint-free cloth.

Cleaning adhesive from the rubber rollers

The rubber rollers are designed to be self-cleaning under normal use. If adhesive does accumulate, it can normally be removed by first removing the supply rolls from between the rubber rollers and then advancing a scrap piece of regular bond paper through the machine. The bare adhesive will tend to attach to the bond paper. If this method of cleaning does not work, the rubber rollers can be cleaned with a light solvent such as isopropyl alcohol. Take care not to scratch, cut or chip the rollers. For best results when laminating, it is critical that the lower idler bar be kept clean of adhesive buildup.

Product Specifications

Footprint	18.5x28.125x15 in. (47x71.4x38.1 cm)
Weight/Packed Weight	57 lbs (40.8 kg) / 72 lbs (47.6 kg)
Document Thickness (max.)	0.10 in. (2.5 mm) Up to 3/16 in. foam core with tray removed
Finished Document Width (max.)	25 in. (63.5 cm)
Power Requirements	None
Cutter	Removable, replaceable cutter

Troubleshooting

Symptom	Cause	Solution
Long documents (such as banners) are not aligned with supply layers after laminating.	Feed tray not installed correctly or supply roll not seated at base of slot in side of machine.	Verify tray is completely installed so it is level and square. Verify supply rolls are completely seated at base of slots in side of machine.
Cut blade does not slide smoothly.	Upper blade bar sticking in side plate groove or blade sticking on blade bar.	Apply silicon lubricant to all surfaces of blade bars.
Supply does not exit machine between blade bars.	Supply is curled or adhesive has been transferred to the rubber rollers causing the supply to stick.	Reposition supply between blade bars. Clean adhesive from rubber rollers if necessary.
Cut blade does not cut well.	Cut blade has accumulated adhesive buildup or is dull.	Clean adhesive buildup from cut blade using isopropyl alcohol. Replace blade if necessary.
Thin and/or wide documents tend to wrinkle during lamination.	Paddle not operated correctly, or feed tray and/or paddle are not flat.	Ensure paddle is pushed forward completely after document is loaded and aligned. Ensure document extends about 1-2 in. (2.5 - 5 cm) past edge of paddle before pushing paddle forward. Also, check that leading edge of document is evenly adhered ("locked") to lower supply roll by temporarily pulling paddle back after it has been completely pushed forward. Check paddle and feed tray for flatness.

Symptom	Cause	Solution
Document difficult to load.	Paddle not pulled back to “up” position or has adhesive buildup on underside.	Before loading document, pull paddle back to “up” position. Ensure underside of paddle is clear of any obstruction or adhesive buildup.
Supply wrinkles don't go away as crank handle is turned clockwise.	Upper and/or lower supply roll(s) are not firmly seated at base of slot in side of machine.	Verify supply rolls are firmly seated at base of slots in side of machine.
Supply does not lay flat, curls and/or wrinkles.	Adhesive buildup on lower idler bar.	Clean adhesive buildup from lower idler bar using isopropyl alcohol.



© 2011 Brady Worldwide, Inc. All Rights Reserved.