

# VariQuest<sup>®</sup>

Perfecta<sup>®</sup> STP Series



## Perfecta<sup>®</sup> 2400STP & Perfecta<sup>®</sup> 3600STP Poster Design System

Quick Start & Introduction

# Perfecta® STP Series Quick Start

## Introduction

This introductory document includes legal notices and safety instructions, describes the use of the front panel and lists error messages that you may encounter. For further information, contact your authorized VariQuest® Dealer.

This introductory document works for both the Perfecta® 2400STP and the Perfecta® 3600STP. Information provided is identical for both machines unless otherwise noted.

Remember: Use only genuine VariQuest® Perfecta® Ink Cartridges

## Legal Notices

© Copyright 2021, Varitronics®, LLC.

This manual is copyrighted with all rights reserved. No portion of this manual may be copied or reproduced by any means without the prior consent of Varitronics, LLC.


While every precaution has been taken in preparation of this document, Varitronics assumes no liability to any party for any loss or damage caused by errors or omissions or by statements resulting from negligence, accident or any other cause. Varitronics further assumes no liability for incidental or consequential damages arising from the use of this document. Varitronics disclaims all warranties of merchantability or fitness for a particular purpose.

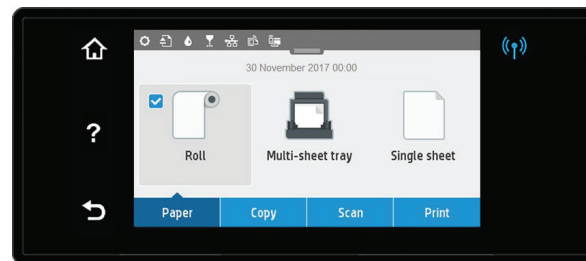
Varitronics reserves the right to make changes without further notice to any product or system herein to improve reliability, function or design.

This software and documentation are based in part on software and documentation under license from Hewlett-Packard Company. Copyright (c) 2016 Hewlett-Packard Development Company, L.P.




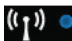
Reproduction of this material, in part or whole, is strictly prohibited without the written permission of Varitronics, LLC. For more information contact: Varitronics at 7200 93rd Ave N, Suite 120, Brooklyn Park, MN 55445 USA.

## Front Panel








The front panel gives you complete control of your printer. **Dynamic** information in central area displays current activity. Dashboard (swipe down from top) displays **Home screen** icons. **Fixed** icons on left and right (normally not all displayed at once). **Power**  is illuminated when the printer is on.







### 1. Fixed Icons

Icon	Description	Icon	Description
	Return to home screen.		Return to previous screen.
	View current screen help.		Wireless network active (blue).

### 2. Home Screen Icons

Icon	Description	Icon	Description
	Change printer settings.		View printhead information.
	Eject scanned original.		View network status and configure network (wireless or wired).
	View ink supply information.		View WiFi direct information.
			View and configure ePrint.

### 3. Dynamic Icons

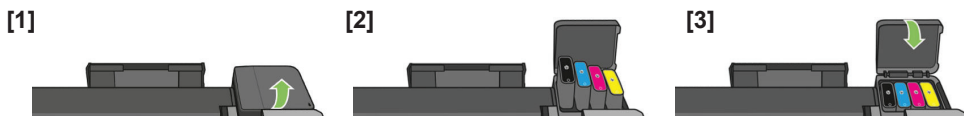
Icon	Description	Icon	Description
	Roll paper options.		Single-sheet paper options.
	Multi-sheet tray options.		White check indicates active paper source.

## Install Ink

**CAUTION!**  
Do not remove an ink cartridge while printing. Make sure you insert the ink cartridge into the slot with the same colored letter as the cartridge you are installing.

### To replace an ink cartridge:

1. With printer **ON**, open ink cartridge cover and wait until carriage stops moving.
2. Pull out the ink cartridge.
3. Insert the new ink cartridge and close ink cartridge cover.



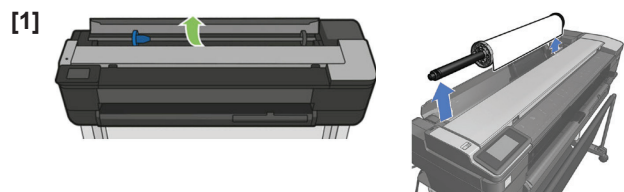
**MAINTENANCE TIP:**  
To maintain the printhead health, we strongly recommend that you leave the printer on or in sleep mode, whenever possible. In both cases, the printer will wake from time to time to maintain the printhead.

To do this, on your printer's control panel, tap/drag down the top menu > Select  > Scroll down to **Auto-Off** > Select **Never**.

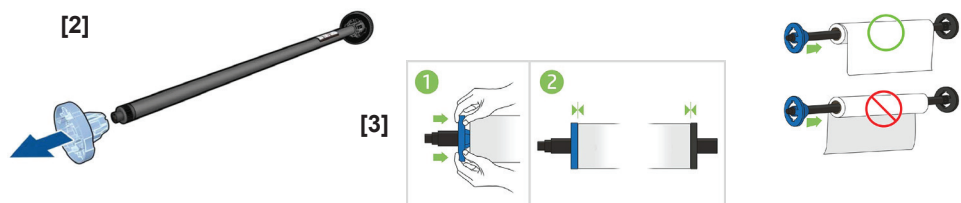
## Install Paper

### Load Spindle


1. Open roll cover and remove spindle. **Do not insert your fingers into spindle supports during the removal process.**

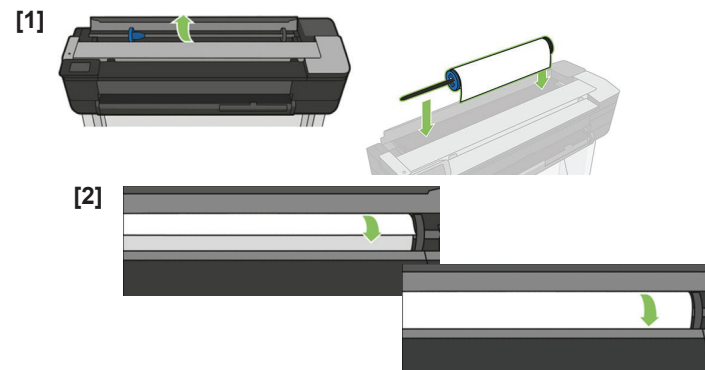


2. Remove blue paper stop from end of spindle and slide on new roll. Orient paper as shown.
3. Replace blue paper stop on open end of spindle and push toward roll.

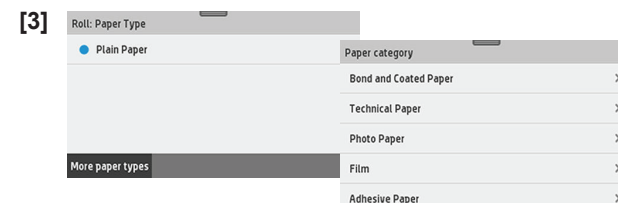


## Load Paper Roll in Printer

1. On dashboard, press , then touch **Load Roll**. Open roll cover and insert spindle with blue hub on left (from front). Ensure paper edge is straight.
2. Insert edge of paper into printer and roll until you feel resistance. **Do not push your fingers inside paper path.** When printer detects paper, it beeps and feeds in paper automatically.




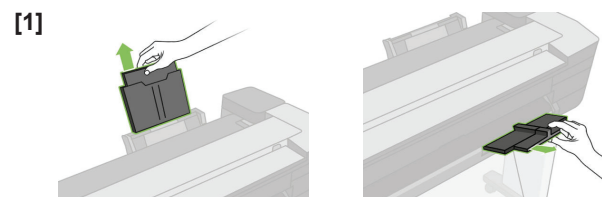
3. On front panel, select paper category and type. Touch **More paper types** to see more types. Close roll cover and touch **OK**.



## Use the Multi-Sheet Tray

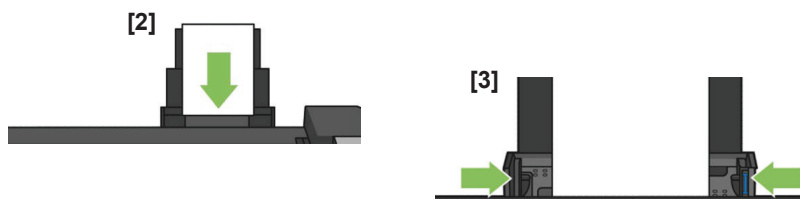
If a roll or single sheet is already loaded, you will have to touch **Unload Roll** and wait until it is automatically unloaded. If no roll is loaded or the roll has run out of paper, the multi-sheet tray is active by default.

1. On front panel, touch , then touch **Use multi-sheet tray** and adjust the input and output tray extensions, depending on the length of the paper: the first extension is for A4 and the second extension for A3 paper.



2. Load sheets of paper into the tray with printed side facing outward. Ensure that the sheets are all the same size.

3. Adjust tray to fit width of paper.



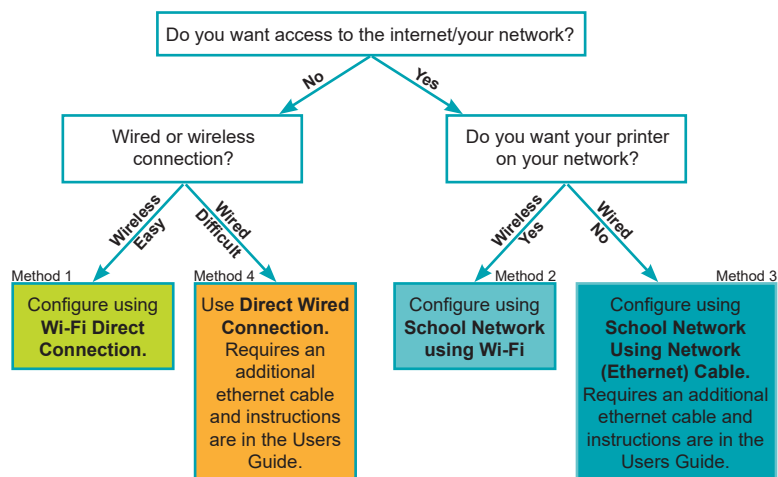
## Connect the Design Center 2300 (DC2300) to the Perfecta® STP Series Printer

Before printing from the Design Center to the *Perfecta® STP Series* printer, you must first set up the Design Center software and the *Perfecta STP Series* printer.

**Note:** For further instructions on connection methods, please visit the User's Guide at [resources.variquest.com](https://resources.variquest.com)

## Select a Connection Method

Follow the tree chart to help identify what connection method is best for you.



Still not sure which connection is best for you or looking for more information on each connection method? Review the chart to the right for more details.

## Wi-Fi Direct - Method 1 (Preferred Method)

**Note:** Easy to install - instructions on page 5

Wi-Fi Direct is a connection that allows for device-to-device communication, linking devices together without a network.

### Advantages:

- No IT required
- No additional cords required
- Printer and Design Center are off the network

### Disadvantages:

- You are unable to get access to the internet or Google Drive™ online storage service without disconnecting from the printer
- You are unable to print from multiple locations across the school

## School Network Using Wi-Fi - Method 2

**Note:** Medium difficulty to install - instructions on page 5

### Advantages:

- Access to school network and Internet access with Google Drive™

### Disadvantages:

- IT involvement
- The printer may be discovered by others on the network involvement

## School Network Using Network (Ethernet) Cable - Method 3

**Note:** Medium difficulty to install - Access the User's Guide, located at [resources.variquest.com](https://resources.variquest.com) Requires additional ethernet cord (not included)

### Advantages:

- Access to school network and internet access with Google Drive™
- Printer is off the network and not discoverable without a password

### Disadvantages:

- IT Involvement
- Requires an additional ethernet cord

## Direct Wired Connection - Method 4

**Note:** Most difficult to install - Access the User's Guide, located at [resources.variquest.com](https://resources.variquest.com) Requires additional ethernet cord (not included)

### Advantages:

- No IT Required
- Printer and Design Center are off the network
- This ensures connection if you are having difficulty keeping a strong connection between the Perfecta® STP Series Printer and Design Center

### Disadvantages:



- Spatial requirements due to a wired connection
- Requires an additional ethernet cord

## Configure DC2300 & Perfecta STP Series via Wi-Fi Direct - Method 1

**Note:** This is a direct wireless connection and does not use any external networks.

1. On the *Perfecta*® STP Series Printer, setup your Wi-Fi Direct connection.

### Turn on Wi-Fi Direct:

- a. Drag down or tap the top menu
- b. Touch  on the top left
- c. In the Setup menu, select Wi-Fi Direct
- d. In the Wi-Fi Direct Settings menu, toggle Wi-Fi- Direct to ON.
- e. In the Connection Method, choose Manual, then touch  to exit.

### To Verify Wi-Fi Direct is Enabled:

- a. Drag down or tap the top menu
- b. On the *info* menu, verify the printer's Wi-Fi Direct connection is enabled by scrolling up or down to find the correct printer (e.g., **Direct-xx HP DesignJet T830**). If Wi-Fi Direct is enabled, the Wi-Fi Direct network name and password will display.

2. Start the DC2300. The VariQuest® Software launches automatically.

3. Immediately connect the DC2300 to the *Perfecta STP Series* Printer with Wi-Fi Direct Connection (i.e., DIRECT-xx HP DesignJet T830) using the *Windows Wireless Network utility* on the bottom right of your screen.

**Note:** Enter one of two passwords: Either the Security Key located on the Info menu of your printer's control panel or the PIN located on your router label.

**Attention:** You may need to minimize the VariQuest Software in order to see the utility.




4. Once connected, focus your attention back onto the VariQuest® Software.
5. In the Welcome screen, touch **OK**, follow the setup options by going under **Workroom Assistant > Setup > Output Devices** - then select the *Perfecta STP Series* by checking the box and clicking **OK**.
6. You will then be prompted to enter your school mascot and name. Once you have completed entering this information, click **OK** and you will be taken back to the Menu screen where the *Perfecta STP Series* icon will be present.
7. Now, go back into **Workroom Assistant > Setup > Network Connection**, then select the *Perfecta STP Series* printer.

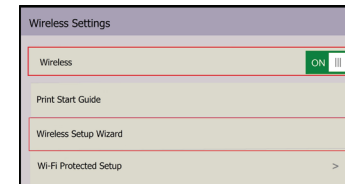
8. On the right side under *Network Printer Settings* select **Wi-Fi Direct**. Select **OK**.

9. You are now able to print from the DC2300 to the *Perfecta STP Series* Printer.

## Configure via School Network Using Wi-Fi - Method 2

Both the DC2300 and *Perfecta*® STP Series printer must be connected to your local network before starting this process.

1. On the *Perfecta STP Series*, swipe down on the dashboard or tap the top menu, touch  on the top left, then scroll down and touch **Network setup > Wireless settings**.
2. Select **Wireless Setup Wizard**. The printer will search for wireless routers.



3. Choose a *Network Name*, then enter the **Password**. Touch **Apply** when done.
4. In the *Connection Successful* menu, touch **OK**.
5. Start the **DC2300**. The Design Center Software launches automatically.
6. In the *Welcome* screen, touch **OK**, follow the setup options by going under **Workroom Assistant > Setup > Output Devices** - then select the *Perfecta STP Series* by checking the box and clicking **OK**.
7. You will then be prompted to enter your school mascot and name. Once you have completed entering this information, click **OK** and you will be taken back to the Menu screen where the *Perfecta STP Series* icon will be present.
8. Now, go back into **Workroom Assistant > Setup > Network Connection**, then select the printer you would like to connect with the DC2300.
9. On the right side under *Network Printer Settings* select *School Network* where it will then prompt you to enter your *Perfecta STP Series* IP address. Once entered, select **OK** and **OK** again (Find the printers IP address by dragging down or tapping the top menu of the printer screen and scrolling up or down on the *Info* menu. The IP address will be present 2nd from the top).
10. Go back to the *Menu* screen and the *Perfecta STP Series* icon should be present, so you are able to print from the DC2300 to the *Perfecta STP Series*.



## Mobile Printing from an iOS Device

You can print directly from your smartphone or tablet in just a few simple steps wherever you are using your mobile iOS device. Method 1 is for printing from a mobile device when both your printer and device are connected to the internet. Method 2 is for printing without connecting to a wireless network.

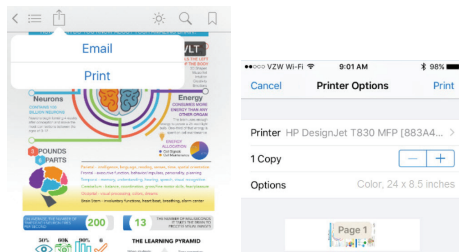
**Note:** Mobile printing is also supported for Android depending on the version of your device. To print from Android™ devices, download the HP Print Service Plugin app from Google Play.

## Print via Wireless Internet using iOS Device

1. Connect the *Perfecta® STP Series* printer and your device to the local internet. Make sure your mobile device has Wi-Fi **enabled**.

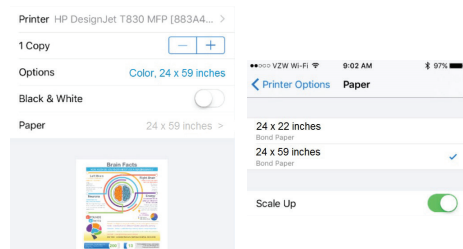
**Note:** The mobile device and printer Wi-Fi **must** be connected to the same internet.

2. On your mobile device, choose the document you want, then touch **Print**.
3. Select your **Printer** (e.g., DIRECT-xx HP DesignJet).



4. Select paper size and other options (e.g., paper size, color, black & white).

**Note:** The print will automatically size itself to how it was designed. To print on the size of the loaded paper, you must select it.

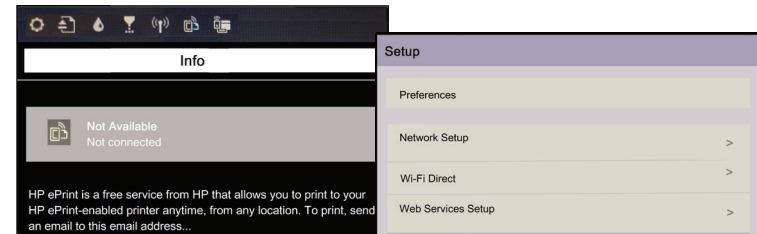


5. When done, touch **Print**. The document will be sent to the *Perfecta STP Series* printer.

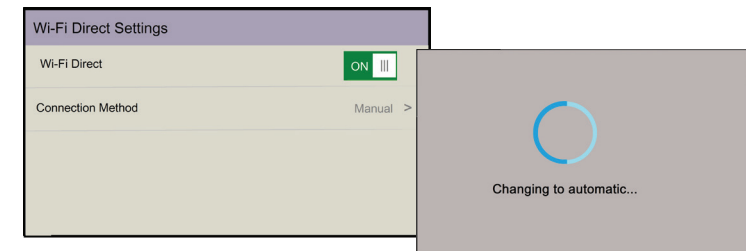
## Print without Wireless Network using iOS Device

To connect the printer to your phone without using a wireless network, you must use the **Direct Printing** option.

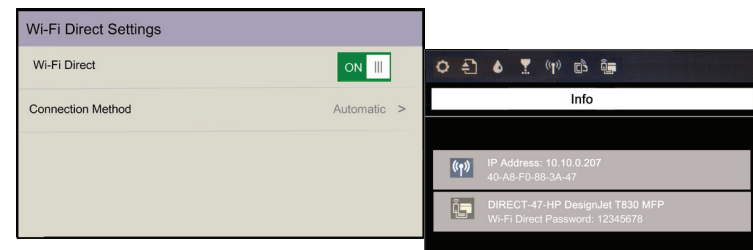
1. On the printer, select ⚙️ at top of screen. The info menu will indicate the printer is not connected.
2. Select **Setup** and choose **Wi-Fi Direct**.



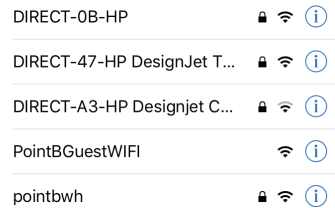
3. In *Wi-Fi Direct Settings* menu, make sure *Wi-Fi Direct* is **ON**. The *Connection Method* will indicate **Manual** and the printer will change to automatic.



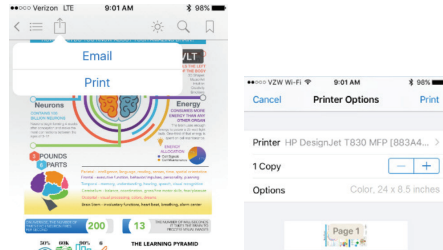
4. When the *Wi-Fi Direct Settings* change to Automatic, touch ⚙️ to display the **Info** menu with a list of available printers. Note the password for later.



5. Choose A Network list, select the printer (e.g., **DIRECT-xx-HP-DesignJet**) and when prompted, enter the password from the **Info** screen.

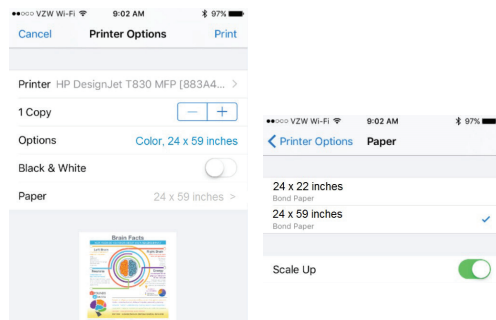


6. On your mobile device, select a document, then touch **Print** and select your **Printer** (e.g., **DIRECT-xx HP DesignJet**).



7. Select the paper size and other options you want (e.g., paper size, color, black & white).

**Note:** The print will automatically size itself to how it was designed. To print on the size of the loaded paper, you must select it.

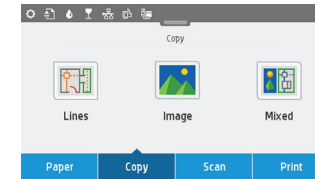


8. When done, touch **Print**. The document will be sent to the *Perfecta® STP Series* Printer.

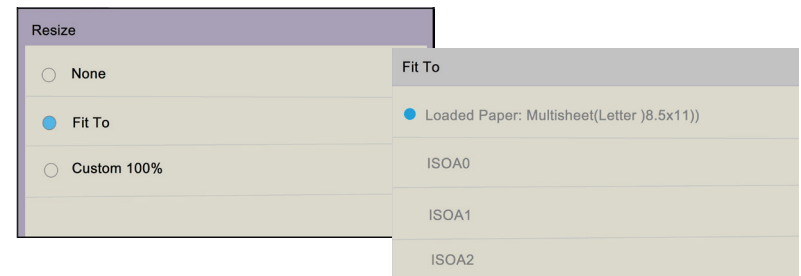
## Setup Scan to Print

**Note:** Steps 1-4 are a one-time setup. Once done, scan-to-print will resize to the loaded paper size.

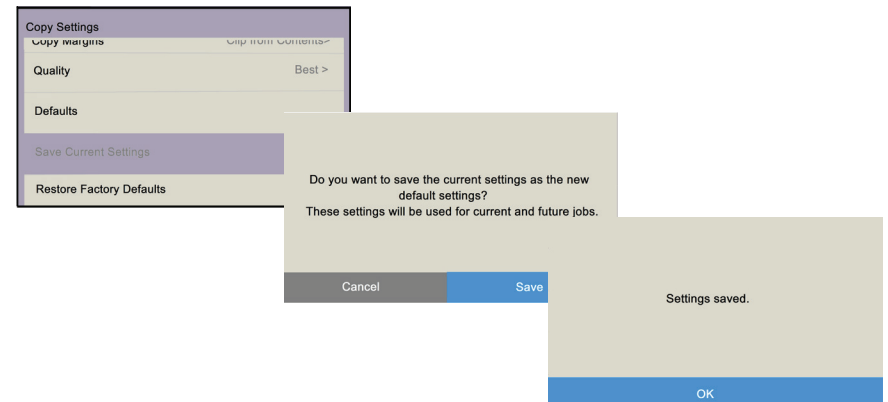
1. Select **Copy** then touch an option for your copy (e.g., Lines, Image or Mixed).



2. At the bottom of the screen, touch , then scroll down and touch **Resize**.
3. Select **Fit To** and choose the **Loaded Paper**.



4. Scroll to **Save Current Settings**, then at the prompt, select **Save**, then **OK**.

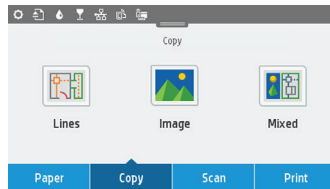


## Scan to Print

Scan-to-print is performed from the **Copy** tab. The printer first scans the original into memory, then prints the scanned image. *Do not feed the scanner while printing. Only one action can be done at a time. Scanner will not accept paper when printing.*

**Note:** Vertical/horizontal positioning depends on how you scan the document. Placing document vertically prints a larger poster. Placing horizontally prints a smaller poster.

1. On the front panel, touch **Copy** tab., then choose option for your document.

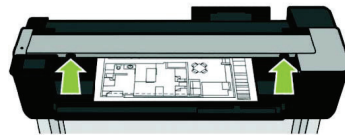


2. Select the number of copies (1 to 99) and the paper output source (roll, multi-sheet tray, single sheet).
3. Select the copy quality option: **Best, Normal, Draft**.
4. Touch **Copy**. At the prompt, load the original document if you haven't already.

**Note:** For the Perfecta 2400STP, align the edge of the document with the green line shown by the two orange arrows. [1]. For the Perfecta 3600STP, center the document on the orange arrow. [2]



5. Push the sheet into the insertion slot until you feel it contact the rollers. The scanner will automatically grab the sheet and move it into position for scanning.
6. If the sheet loads incorrectly, you can pull it out manually and retry. To unlock scanner and retrieve jammed document, push the two buttons (see green arrows.)
7. When scan is complete, touch **Eject**.



## Print/Scan to USB

You can print a file from a USB thumb drive connected to the Perfecta® STP Series printer or save a scanned image from the Perfecta® STP Series printer to a USB flash drive.

### Print from a USB

1. Insert the USB flash drive into the USB port on the printer.



2. On the Dashboard, select **Print**.
3. Touch **Print from USB** and select the document you want (only JPEG, TIFF and HP-GL/2 are valid file types).
4. Select the number of copies and touch **Print**.

### Save Scanned Image to a USB

1. Insert a USB flash drive into the USB port
2. On the Home menu, select **Scan**.
3. Select **USB**.
4. Select your settings and click **Start Scan** to start the scanning process.
5. Insert document into scanner with the middle of the document aligned with the arrow.

## Technical Support

For technical assistance, please contact your Authorized VariQuest Dealer or the VariQuest Technical Support Team:

- **Email:** tech\_support@variquest.com
- **Phone:** 1-800-328-0585

Additional information can be found in the User's Guide located at [resources.variquest.com](https://resources.variquest.com).

Y2901107 05/22 ©2022 Varitronics, LLC. All Rights Reserved.