

# VariQuest<sup>®</sup>

Perfecta<sup>®</sup> 2400PRO



## Perfecta<sup>®</sup> 2400PRO Poster Design System

### Assembly Instructions

#### Note:

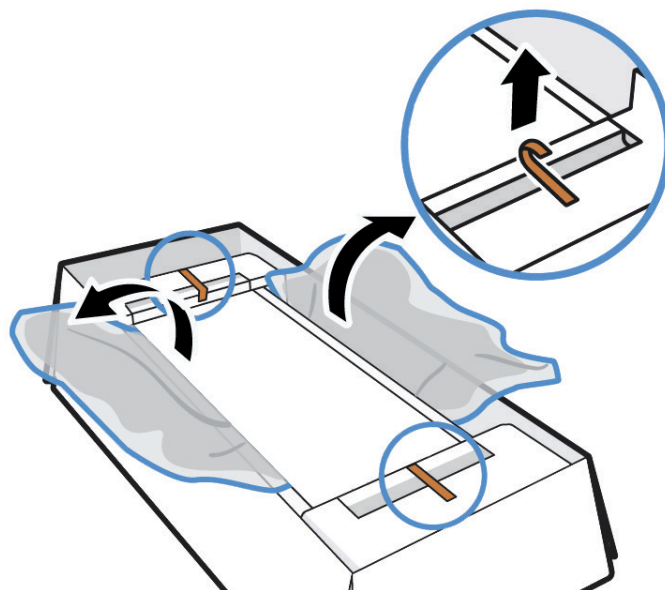
- An A4/Letter sheet of paper (not included) is needed for printhead alignment during set-up.
- LAN not included (needed if LAN connection required).
- Printhead already installed.

#### Contents:

1. Plastic bag which includes:
  - a. Assembly Instructions
  - b. Quick Start Guide
  - c. Power Cord
  - d. USB Cord
  - e. VariQuest Resource Center Registration Card
2. Printer w/ pre-installed introductory ink cartridges.
3. Automatic Sheet Feeder (packaged separately)

### Unpack the Printer

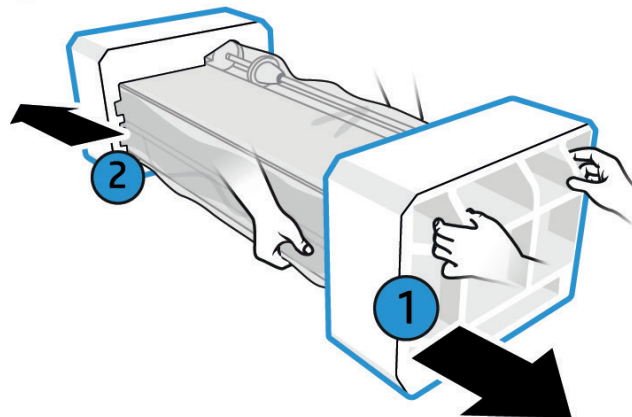
1. Remove the plastic bag from on top of the printer.
2. Open the plastic wrap and remove the orange bands. Open the flaps widely.



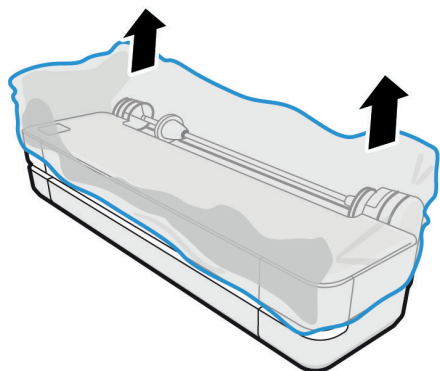
3. Have two people, one person on each side of the printer, lift the printer out of the box and onto a table.

**Attention:** Do not turn the printer upside down or on its side because the ink may leak and cause damage to the printer.

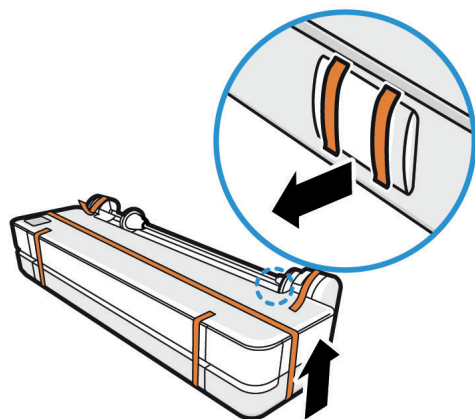
4. Slightly lift the printer and remove the foam end pieces one-by-one.



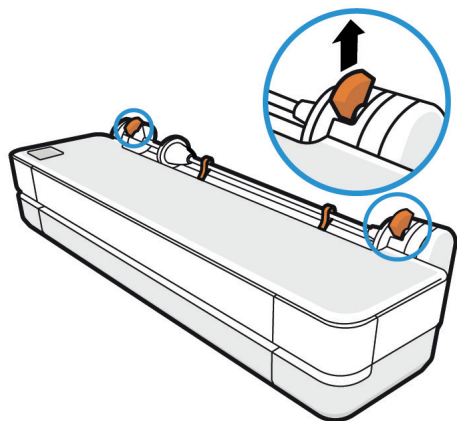
**5.** Remove the plastic covering.



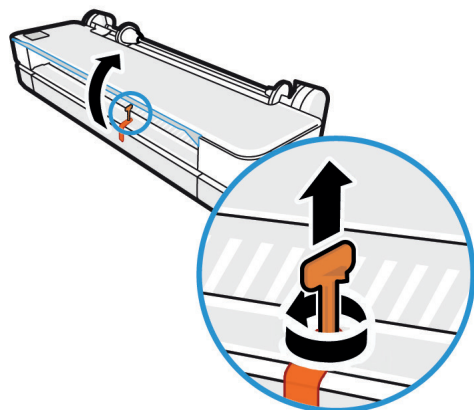
**6.** Remove the tapes and desiccant bag.



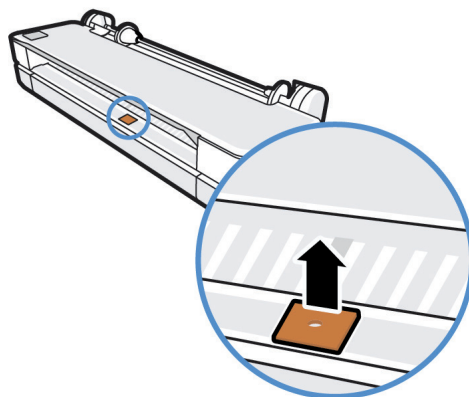
**7.** Remove the 2 spindle tapes and retainers.



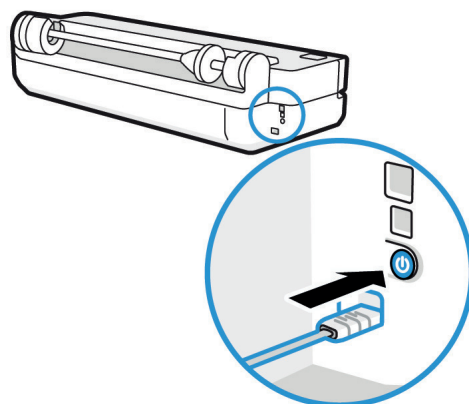
**8.** Open the front door. Rotate, and remove the pin.



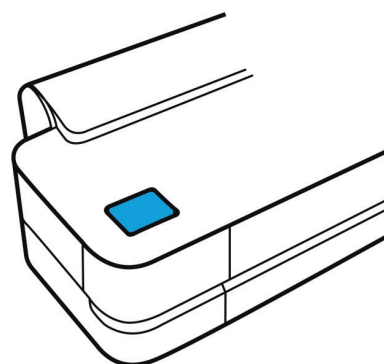
**9.** Remove the cardboard.



**10.** Connect the power cable to the printer and outlet. Turn on the printer.



**11.** The front panel will now guide you through printer setup.



## TECHNICAL SUPPORT

For technical assistance, please contact your Authorized VariQuest Dealer or the VariQuest Technical Support Team.

- Email: [tech\\_support@VariQuest.com](mailto:tech_support@VariQuest.com)
- Phone: 1-800-328-0585