

VariQuest[®]

Perfecta[®] 2400PRO



Perfecta[®] 2400PRO Poster Design System

Quick Start & Introduction

Perfecta® 2400PRO Quick Start

Introduction

This introductory document includes legal notices and safety instructions, describes the use of the front panel and lists error messages that you may encounter. For further information, contact your authorized VariQuest® Dealer.

Remember: Use only genuine VariQuest® Perfecta® Ink Cartridges

Legal Notices

© Copyright 2021, Varitronics®, LLC.

This manual is copyrighted with all rights reserved. No portion of this manual may be copied or reproduced by any means without the prior consent of Varitronics, LLC.

While every precaution has been taken in preparation of this document, Varitronics assumes no liability to any party for any loss or damage caused by errors or omissions or by statements resulting from negligence, accident or any other cause. Varitronics further assumes no liability for incidental or consequential damages arising from the use of this document. Varitronics disclaims all warranties of merchantability or fitness for a particular purpose.

Varitronics reserves the right to make changes without further notice to any product or system herein to improve reliability, function or design.

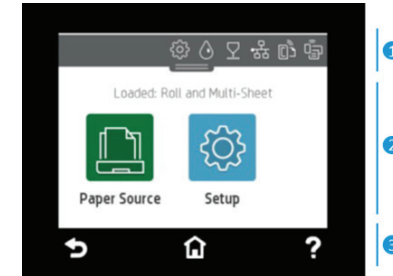
This software and documentation are based in part on software and documentation under license from Hewlett-Packard Company.

Copyright © 2021 Hewlett-Packard Development Company, L.P.

Reproduction of this material, in part or whole, is strictly prohibited without the written permission of Varitronics, LLC. For more information contact: Varitronics at 7200 93rd Ave N, Suite 120, Brooklyn Park, MN 55445 USA.

Front Panel

The front panel gives you complete control of your printer. **Home Screen Dynamic Icons** display information in the central area with current activity. The top menu (swipe down from top) displays **Dashboard Icons**. **Fixed Icons** are on the bottom (normally not all displayed at once).



1. Dashboard Icons

Icon	Description	Icon	Description
	Change printer settings.		View connectivity status info and to perform network configuration.
	View printhead information.		If a network cable is connected this is displayed instead of the above.
	View ink supply information.		View Wi-Fi direct information.
			View and configure ePrint.

2. Home Screen Dynamic Icons

Icon	Description	Icon	Description
	Central area with other dynamic information once clicked on.		Change options for the multi-sheet tray, or to activate it.
	Load, unload, and change options for roll paper.		Load, unload, and change options for single sheets.
			Change the printer settings or print reports.

3. Fixed Icons

Icon	Description	Icon	Description
	Return to home screen.		Return to previous screen.
	View current screen help.		

Install Ink

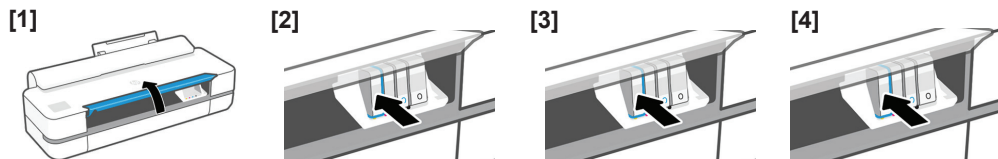


CAUTION!

Do not remove an ink cartridge while printing. Make sure you insert the ink cartridge into the slot with the same colored letter as the cartridge you are installing.

To replace an ink cartridge:

1. With printer **ON**, open the window
2. Press in the ink cartridge to unlock it
3. Remove the ink cartridge
4. Insert the new ink cartridge



MAINTENANCE TIP:

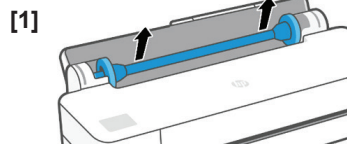
To maintain the printhead health, we strongly recommend that you leave the printer on or in sleep mode, whenever possible. In both cases, the printer will wake from time to time to maintain the printhead.

To do this, on your printer's control panel, tap/drag down the top menu > Select > Scroll down to **Auto-Off** > Select **Never**.

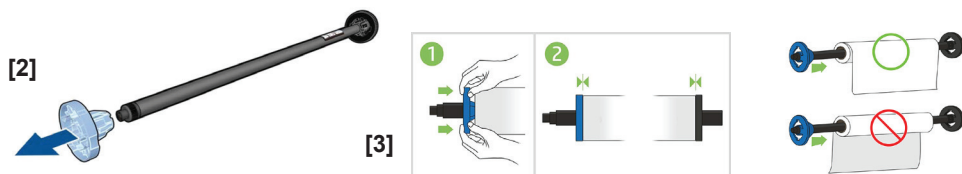
Install Paper

Load Spindle

1. Open roll cover and remove spindle. **Do not insert your fingers into spindle supports during the removal process.**

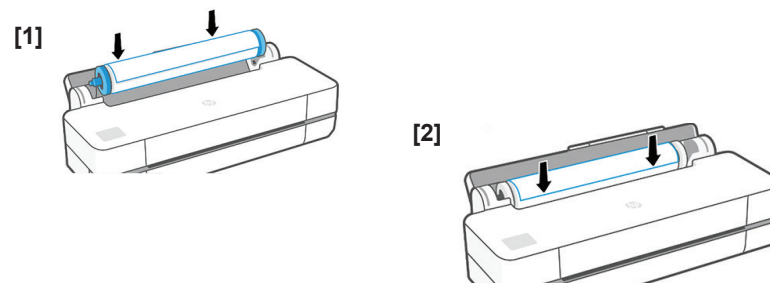


2. Remove blue paper stop from end of spindle and slide on new roll. Orient paper as shown.
3. Replace blue paper stop on open end of spindle and push toward roll.

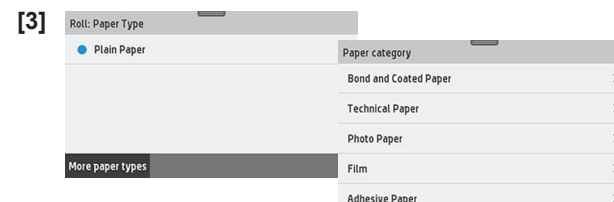


Load Paper Roll in Printer

1. From the front panel, tap then . Insert the spindle into the printer, holding it by both ends.
2. Insert edge of paper into printer and roll until you feel resistance. **Do not push your fingers inside paper path.** When printer detects paper, it beeps and feeds in paper automatically.



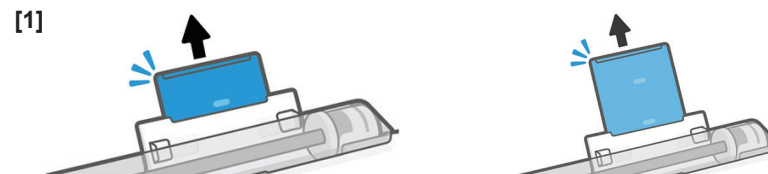
3. On front panel, select paper category and type. Touch **More paper types** to see more types. Close roll cover and touch **OK**.



Use the Multi-Sheet Tray

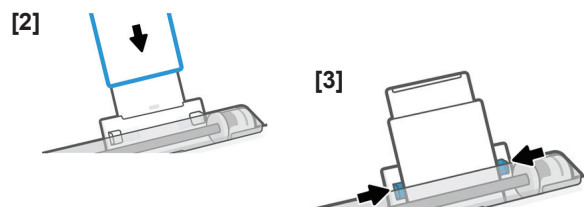
If a roll or single sheet is already loaded, you will have to touch **Unload Roll** and wait until it is automatically unloaded. If no roll is loaded or the roll has run out of paper, the multi-sheet tray is active by default.

1. On front panel, touch then then **Use multi-sheet tray** and adjust the input and output tray extensions, depending on the length of the paper: the first extension is for A4 and the second extension for A3 paper.



2. Load sheets of paper into the tray with printed side facing outward. Ensure that the sheets are all the same size.

3. Adjust tray to fit width of paper.



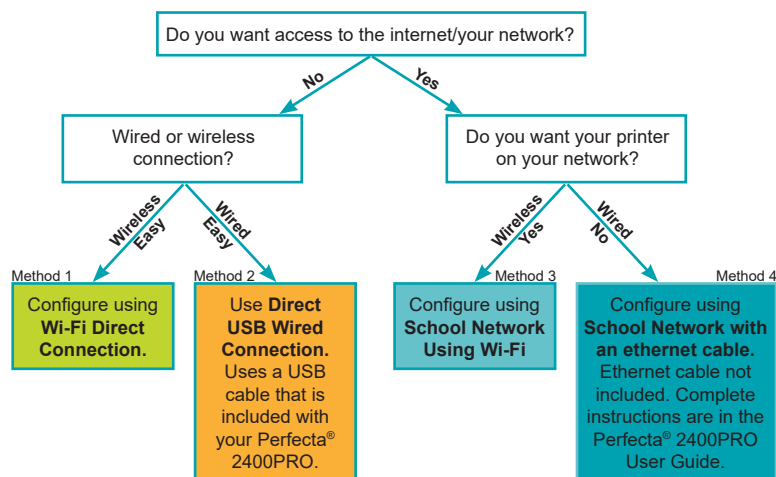
Connect the Design Center 2300 (DC2300) to the Perfecta® 2400PRO Printer

Before printing from the DC2300 to the Perfecta 2400PRO Printer, you must first set up the Design Center Software and the Perfecta 2400PRO.

Note: For further instructions on connection methods, please visit the User's Guide at resources.variquest.com

Select a Connection Method

Follow the tree chart to help identify what connection method is best for you.



Still not sure which connection is best for you or looking for more information on each connection method? Review the chart to the right for more details.

Wi-Fi Direct - Method 1

Note: Easy to install - instructions on page 5

Wi-Fi Direct is a connection that allows for device-to-device communication, linking devices together without a network.

Advantages:

- No IT required
- No additional cords required
- Printer and Design Center are off the network

Disadvantages:

- You are unable to get access to the internet or Google Drive™ online storage service without disconnecting from the printer
- You are unable to print from multiple locations across the school

Direct USB Wired Connection - Method 2 (Preferred Method)

Note: Easy to install - instructions on page 5

Advantages:

- No IT Required
- Printer and Design Center are off the network
- This ensures connection if you are having difficulty keeping a strong connection between the Perfecta® 2400PRO Printer and Design Center

Disadvantages:

- Design Center/PC and printer need to be in close proximity.

School Network Using Wi-Fi - Method 3

Note: Medium difficulty to install - instructions on page 5

Advantages:

- Access to school network and Internet access with Google Drive™

Disadvantages:

- IT involvement
- The printer may be discovered by others on the network involvement

School Network Using Network (ethernet) Cable - Method 4

Note: Medium difficulty to install - Access the User's Guide, located at resources.variquest.com Requires additional ethernet cord (not included)

Advantages:

- Access to school network and internet access with Google Drive™
- Printer is off the network and not discoverable without a password

Disadvantages:



- IT Involvement
- Requires an additional ethernet cord

Configure DC2300 & Perfecta® 2400PRO via Wi-Fi Direct - Method 1

Note: This is a direct wireless connection and does not use any external networks.

1. On the Perfecta 2400PRO Printer, setup your Wi-Fi Direct connection.

Turn on Wi-Fi Direct:

- a. Drag down or tap the top menu
- b. Touch  on the top left
- c. In the Setup menu, select Wi-Fi Direct
- d. In the Wi-Fi Direct Settings menu, toggle Wi-Fi- Direct to ON.
- e. In the Connection Method, choose Manual, then touch  to exit.

To Verify Wi-Fi Direct is Enabled:

- a. Drag down or tap the top menu
- b. On the info menu, verify the printer's Wi-Fi Direct connection is enabled by scrolling up or down to find the correct printer (e.g., **Direct-xx HP DesignJet T250**). If Wi-Fi Direct is enabled, the Wi-Fi Direct network name and password will display

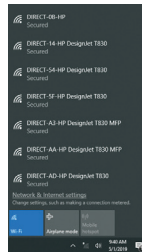
2. Start the DC2300. The VariQuest® Software launches automatically.

3. Immediately connect the DC2300 to the Perfecta 2400PRO printer with Wi-Fi Direct Connection (i.e., DIRECT-xx HP DesignJet T250) using the *Windows Wireless Network utility* on the bottom right of your screen.

Note: Enter one of two passwords: Either the Security Key located on the Info menu of your printer's control panel or the PIN located on your router label.

Attention: You may need to minimize the VariQuest Software in order to see the utility.

4. Once connected, focus your attention back onto the VariQuest Software.
5. In the Welcome screen, touch **OK**, follow the setup options by going under **Workroom Assistant > Setup > Output Devices** - then select the Perfecta 2400PRO by checking the box and clicking **OK**.
6. You will then be prompted to enter your school mascot and name. Once you have completed entering this information, click **OK** and you will be taken back to the Menu screen where the Perfecta 2400PRO icon will be present.
7. Now, go back into **Workroom Assistant > Setup > Network Connection**, then select the Perfecta 2400PRO
8. On the right side under *Network Printer Settings* select **Wi-Fi Direct**. Select **OK**.
9. You are now able to print from the DC2300 to the Perfecta 2400PRO.




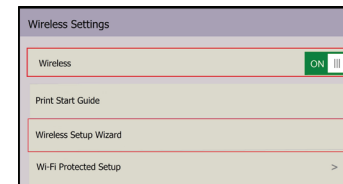
Direct USB Wired Connection – Method 2

1. Power on the Perfecta® 2400PRO and wait for the printer to fully power up.
2. Connect the USB cable (provided) from your Perfecta 2400PRO to one of the open USB ports located on the Design Center 2300.
3. Press the power button on the Design Center 2300.
4. When the VariQuest® program launches, wait a few moments for the Design Center 2300 to recognize the printer.
5. On the Welcome Screen, proceed with the initial setup tasks.

Configuring DC2300 & Perfecta 2400PRO on the School Network via Wi-Fi - Method 3

Both the DC2300 and Perfecta 2400 PRO printer must be connected to your local network before starting this process.

1. On the Perfecta 2400PRO, swipe down on the dashboard or tap the top menu, touch  on the top left, then scroll down and touch **Network setup > Wireless settings**.
2. Select **Wireless Setup Wizard**. The printer will search for wireless routers.



3. Choose a Network Name, then enter the Password. Touch **Apply** when done.
4. In the Connection Successful menu, touch **OK**.
5. Start the DC2300. The Design Center Software launches automatically.
6. In the Welcome screen, touch **OK**, follow the setup options by going under **Workroom Assistant > Setup > Output Devices** - then select the Perfecta 2400PRO by checking the box and clicking **OK**.
7. You will then be prompted to enter your school mascot and name. Once you have completed entering this information, click **OK** and you will be taken back to the *Menu* screen where the Perfecta 2400PRO icon will be present.
8. Now, go back into **Workroom Assistant > Setup > Network Connection**, then select the printer you would like to connect with the DC2300.

- On the right side under *Network Printer Settings* select **School Network** where it will then prompt you to enter your Perfecta® 2400PRO IP address. Once entered, select **OK** and **OK** again (Find the printers IP address by dragging down or tapping the top menu of the printer screen and scrolling up or down on the Info menu. The IP address will be present 2nd from the top).
- Go back to the *Menu* screen and the Perfecta 2400PRO icon should be present, so you are able to print from the DC2300 to the Perfecta 2400PRO.

Mobile Printing from an iOS Device

You can print directly from your smartphone or tablet in just a few simple steps wherever you are using your mobile iOS device. Method 1 is for printing from a mobile device when both your printer and device are connected to the internet. Method 2 is for printing without connecting to a wireless network.

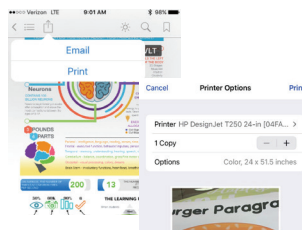
Note: Mobile printing is also supported for Android depending on the version of your device. To print from Android™ devices, download the HP Print Service Plugin app from Google Play.

Print via Wireless Internet using iOS Device

- Connect the Perfecta 2400PRO printer and your device to the local internet. Make sure your mobile device has Wi-Fi enabled.

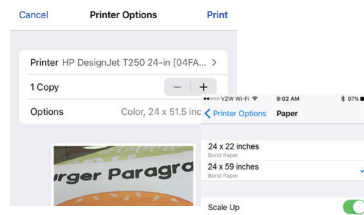
Note: The mobile device and printer Wi-Fi must be connected to the same internet.

- On your mobile device, choose the document you want, then touch **Print**.
- Select your **Printer** (e.g., DIRECT-xx HP DesignJet).
- Select paper size and other options (e.g., paper size, color, black & white).




Note: The print will automatically size itself to how it was designed. To print on the size of the loaded paper, you must select it.

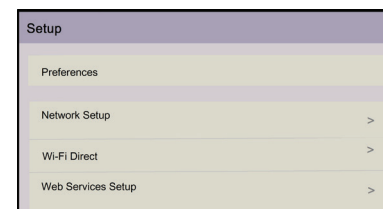
- When done, touch **Print**. The document will be sent to the Perfecta 2400PRO printer.



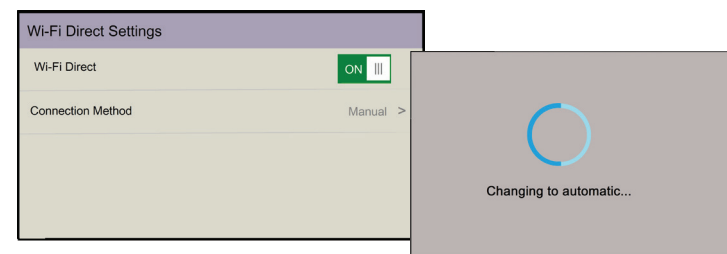
Print without Wireless Network using iOS Device


To connect the printer to your phone without using a wireless network, you must use Wi-Fi Direct.

- On the printer, Swipe down on the dashboard or tap the top menu, and touch  on the top left.
- Select **Setup** and choose **Wi-Fi Direct**.

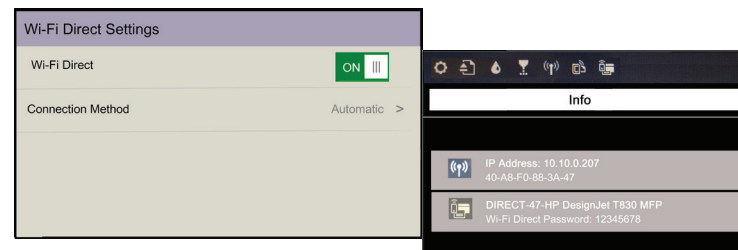


- In *Wi-Fi Direct Settings* menu, make sure *Wi-Fi Direct* is **ON**. The *Connection Method* will indicate **Manual** but you will need to change it to **Automatic**.



- When the *Wi-Fi Direct Setting* is changed to **Automatic**, touch  button, then swipe down or tap the top menu again to view the **Info** tab which displays your printer information. Look for the Wi-Fi Direct Password.

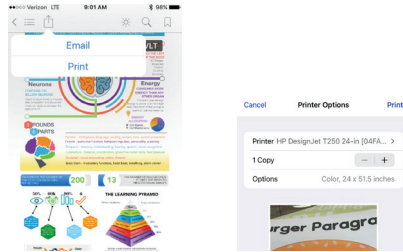
Note: You may need drag down and click on the printer (e.g., DIRECT-xx HP DesignJet) to see the full password.



5. Now, on your phone, under Wi-Fi selection, select the printer (e.g., **DIRECT-xx-HP-DesignJet**) and when prompted, enter the password from the *Info* screen.

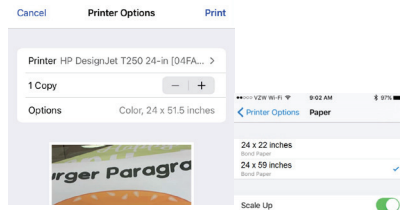
DIRECT-0B-HP	🔒	📶	ℹ️
DIRECT-47-HP DesignJet T...	🔒	📶	ℹ️
DIRECT-A3-HP Designjet C...	🔒	📶	ℹ️
PointBGuestWIFI	📶	📶	ℹ️
pointbwh	🔒	📶	ℹ️

6. On your mobile device, select a document, then touch **Print** and select your **Printer** (e.g., DIRECT-xx HP DesignJet).



7. Select the paper size and other options you want (e.g., paper size, color, black & white).

Note: The print will automatically size itself to how it was designed. To print on the size of the loaded paper, you must select it.



8. When done, touch **Print**. The document will be sent to the Perfecta® 2400PRO Printer.

Technical Support

For technical assistance, please contact your Authorized VariQuest® Dealer or the VariQuest® Technical Support Team:

- **Email:** tech_support@variquest.com
- **Phone:** 1-800-328-0585

Additional information can be found in the User's Guide located at resources.variquest.com.