

VariQuest® Perfecta® Q36

Please read these instructions carefully. These assembly instructions explain how to assemble the printer. Notice that the icons used in this document are also located on the printer packaging. The icons help you locate the parts needed at each stage of the assembly. Because spare screws are supplied, some screws may remain unused after assembly of the printer.

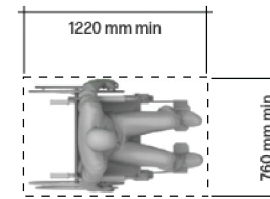
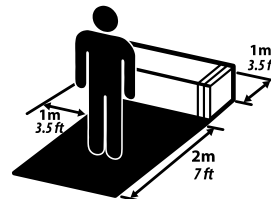
Product working area

Before you start unpacking, consider where you are going to put the assembled product. You should allow some clear space on all sides of the product box. The recommended clearances are shown in the illustration.

To assemble the product you will need at least 3 x 3 m (118 x 118 in) of empty floor space.

To ensure an accessible operating area for printer use, it is recommended to leave a minimum clear space of 760 mm (30 inches) by 1220 mm (48 inches) with an even level around the sides of the printer.

Light reflection (glare) could affect the readability of the control panel, to improve the visibility, select the most suitable theme (dark-light) in the Control Panel.



Perfecta® Q36 Poster Design System

Assembly Instructions



3 people are required to perform certain tasks.

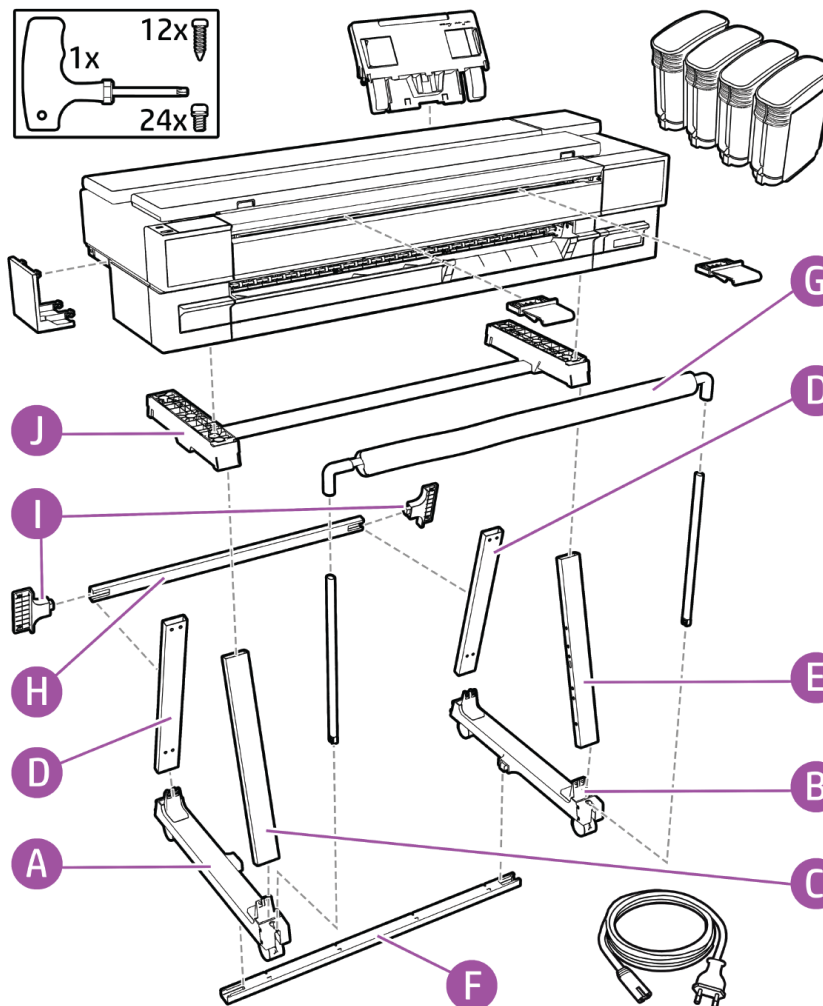


Time required for assembly of the printer is approximately 90 minutes.



Tools required:

- T25 screwdriver (included)
- Utility Knife



Crate Contents

Documentation:

- Quick Start Guide
- Assembly Instructions

Stand Pieces:

- Left bottom cross-connector (A)
- Right bottom cross-connector (B)
- Left front-leg (C)
- Left rear-leg (D)
- Right rear-leg (D)
- Right front-leg (E)
- Bottom cross-tube (F)
- Basket fabric and tube (G)
- Rear cross-tube (H)
- Brackets (I)
- Top cross-beam (J)

Miscellaneous:

- Screwdriver
- Black screws ×24
- Silver screws ×12
- Ink cartridges
- Cable cover
- Refeed preventers ×2
- Power cable
- Maintenance reminder cable tag

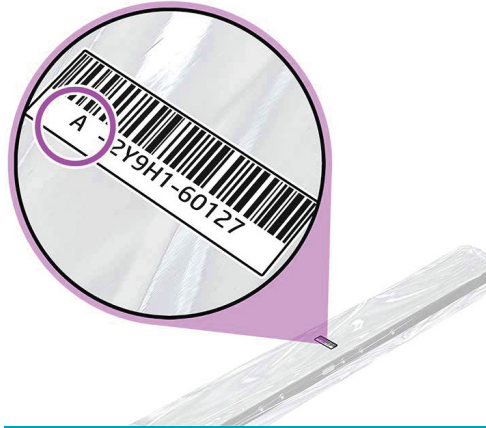
Note: LAN cable not included.

Important: Printhead is preinstalled.

Note: Some bags of parts in the box have a label that shows a letter and part number. Please don't remove the bag of each part before you reach to the corresponding assembly step.

Remove the Packaging

1



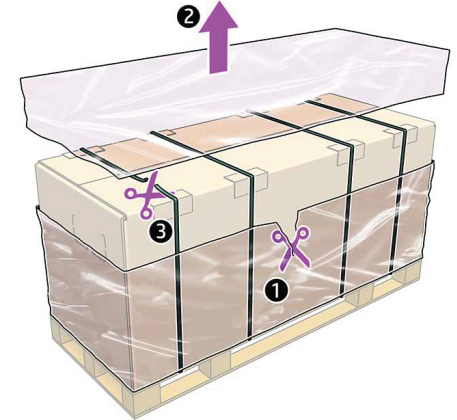
Note: Some bags of parts in the box have a label that shows a letter and part number. Please don't remove the bag of each part before you reach to the corresponding assembly step.

2



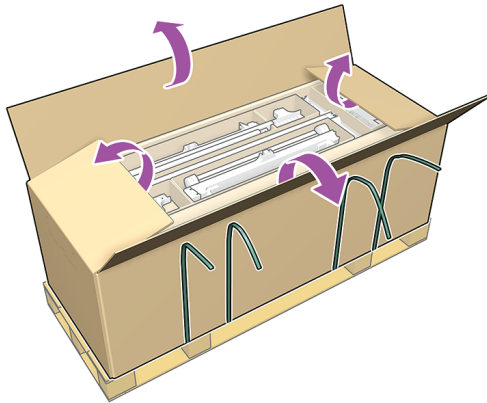
Scan the QR code to view the assembly video before beginning assembly.

3



Remove the protective top sheet and cut the plastic straps.

4



Dispose of the protective top sheet and open the box labeled 1.

Assemble the stand

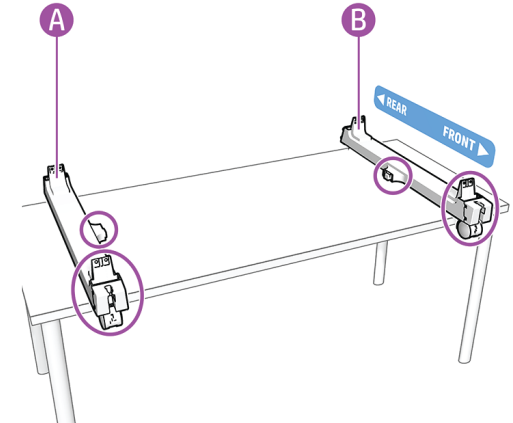
5



Locate the screwdriver and screws included in bag Z.

Note: There are extra screws.

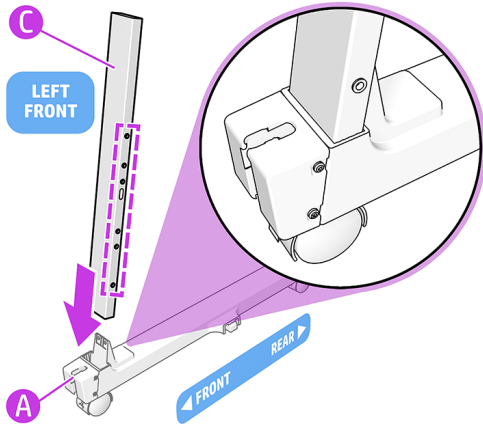
6



VariQuest recommends completing the printer stand assembly on a table. Remove the 2x bottom cross-connectors (A and B) from the box.

Note: They are symmetrical. Position both bottom cross-connectors (A and B) on a table with the pins/connectors of both bottom cross-connectors facing inwards.

7

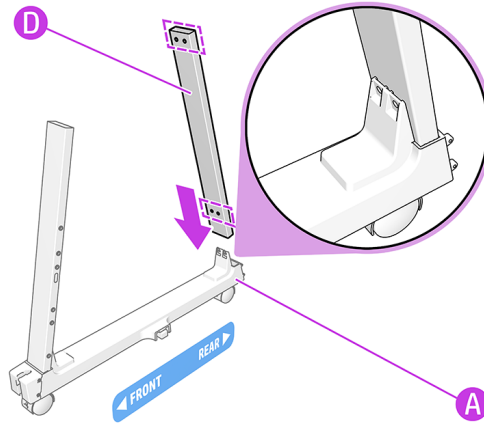


Assemble the Left Side:

Slot the left front-leg (C) onto the front of the left bottom cross-connector (A).

Note: The holes must face inwards.

8

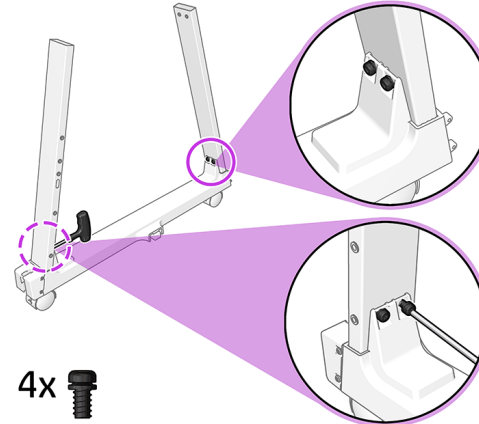


Slot the left rear-leg (D) onto the rear of the left bottom cross-connector (A).

Note: The holes furthest from the end go at the bottom.

Important: Check that the holes of the legs and connectors align.

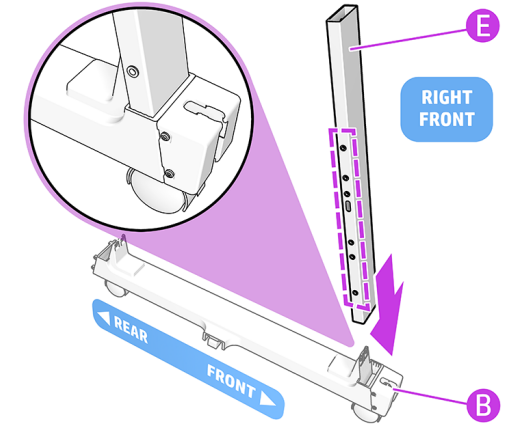
9



Fix the legs in place with two black screws on each side.

Note: Hand tighten until the screw is snug.

10

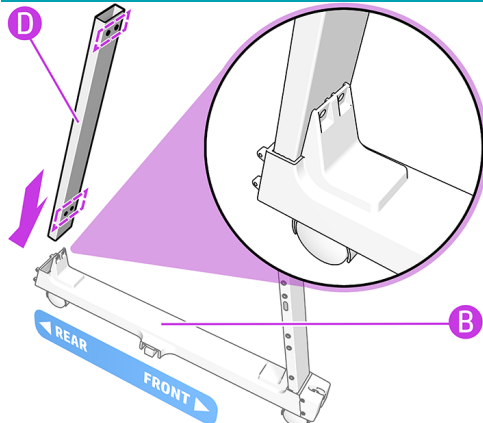


Assemble the Right Side:

Slot the right front-leg (E) onto the front of the right bottom cross-connector (B).

Note: The holes must face inwards.

11

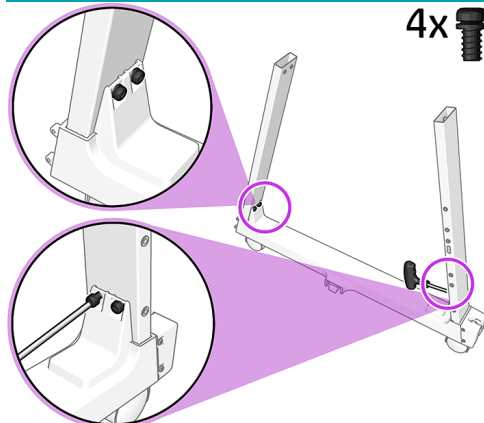


Slot the right rear-leg (D) onto the rear of the right-bottom cross-connector (B).

Note: The holes furthest from the end go at the bottom.

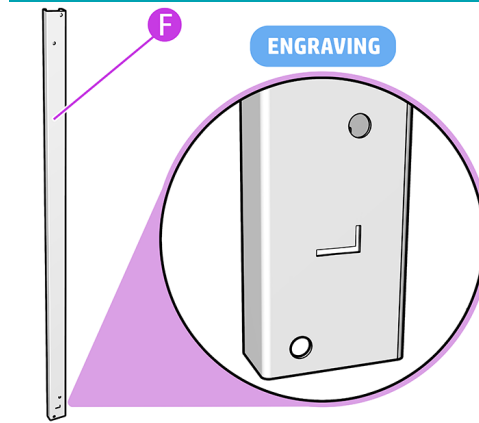
Important: Check that the holes of the legs and connectors align.

12



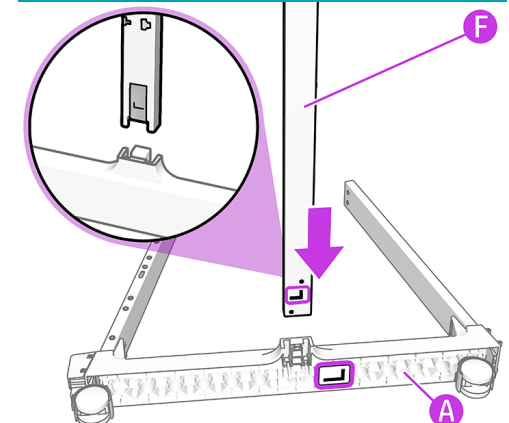
Fix the legs in place with two black screws on each side.

13



Identify the bottom cross-tube (F). The holes and the engraved letter 'L' must face upwards.

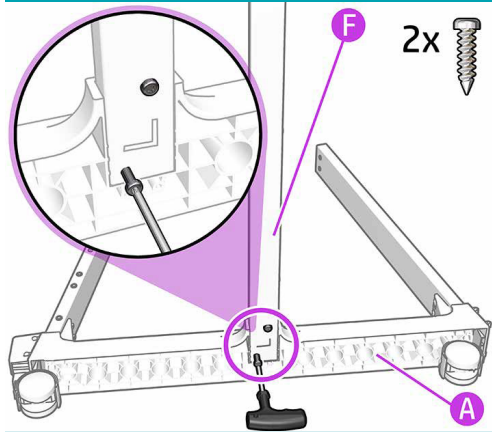
14



Important: Note the position of the holes on the left bottom cross-connector (A).

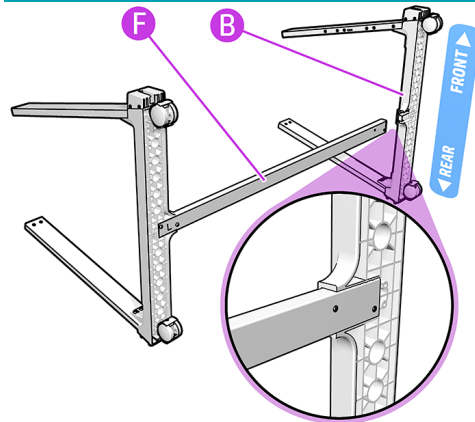
Insert the bottom cross-tube (F) into the slot on the left bottom cross-tube connector (A). Press down until the cross-connector holes align with A.

15



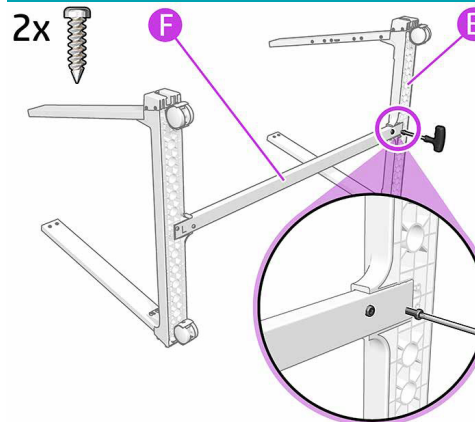
Fix the bottom cross-tube (F) to the left bottom cross-connector (A) with two silver screws.

16



Insert the bottom cross-tube (F) into the right bottom connector (B).

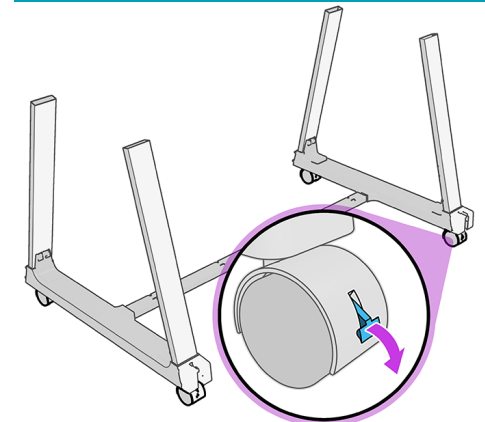
17



Fix the bottom cross-tube (F) to the right connector (B) with two silver screws.

Important: Press the bottom cross-tube (F) in until it aligns with the screw holes.

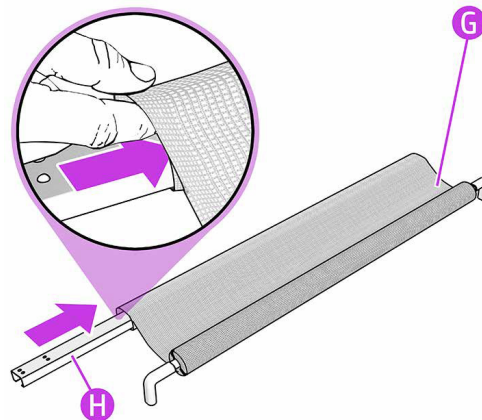
18



Place the stand upright and check the four wheels are locked.

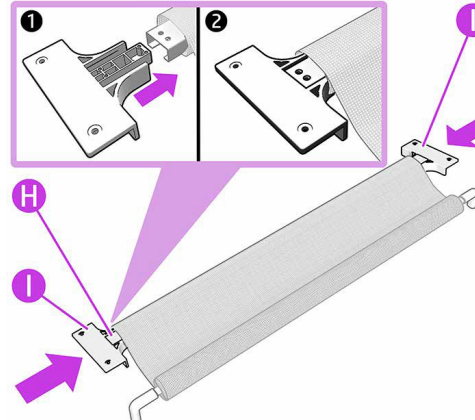
Assemble the basket

19



Unroll the basket fabric (G) and insert the rear cross-tube (H).

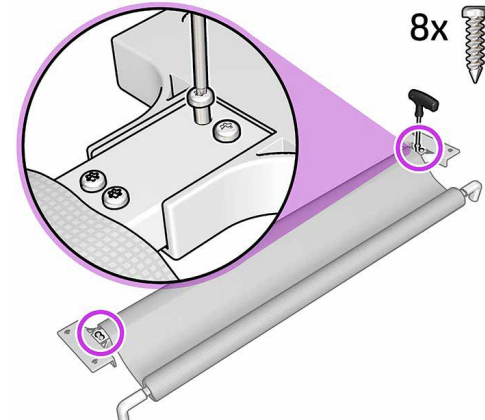
20



Connect the left and right brackets (I) to the rear cross-tube (H) by pushing them into place.

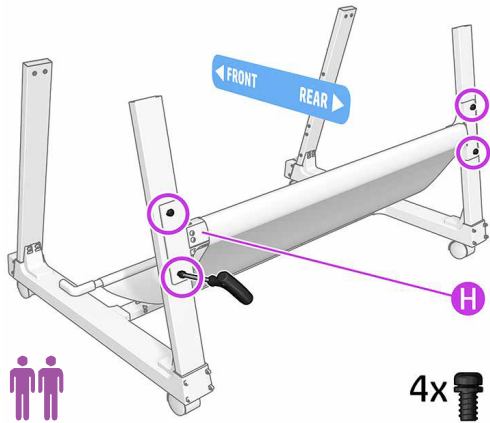
Note: Brackets (I) are in two packages.

21



Fix the brackets in place with four silver screws each side.

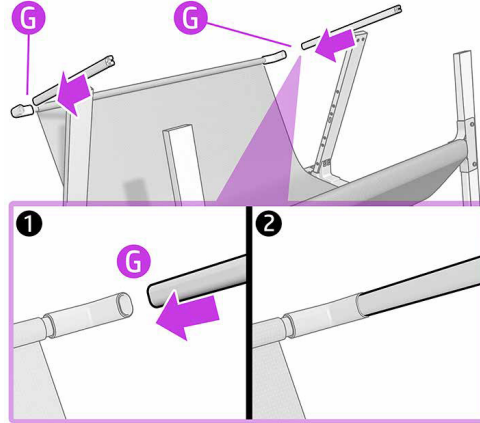
22



Note: Two people recommended for the assembly.

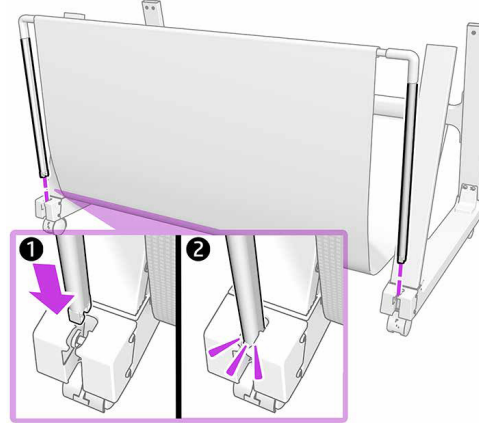
Fix the rear cross-tube (H) to the rear legs with two black screws on each side.

23



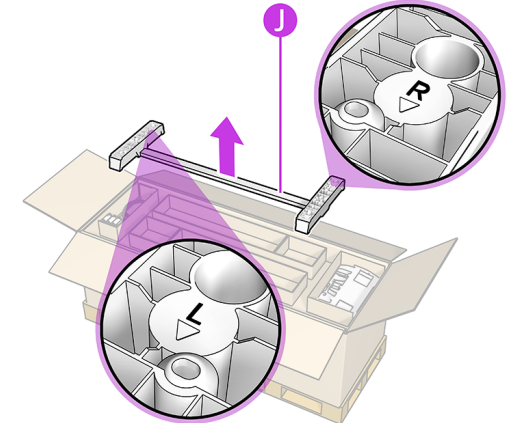
Slot the two tubes into the basket frame (G).

24



Insert the tubes into the slots at the front of both bottom cross-connectors. Push them firmly into place until you hear a click.

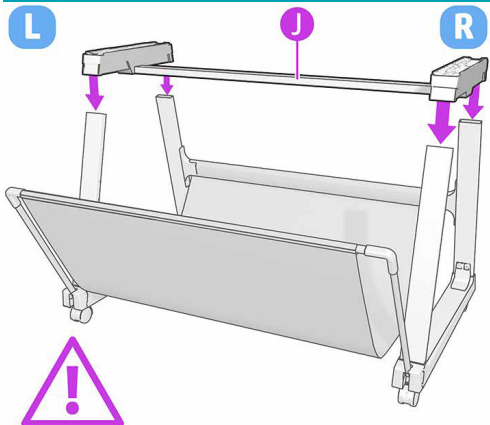
25



Remove the top cross-beam (J) from the box.

Note: There are letters to indicate the left 'L' and right 'R' side.

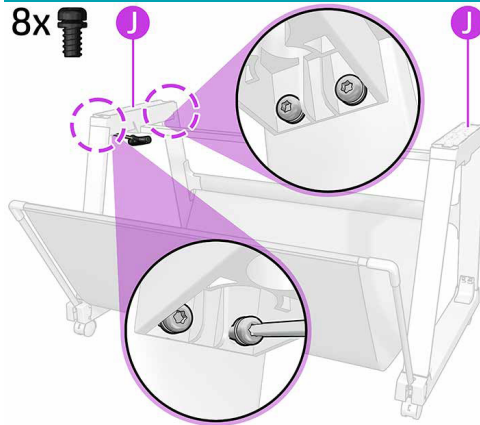
26



Important: Make sure you identify the front and back of the stand.

Position yourself in front of the stand and carefully connect the top cross-beam (J) to it.

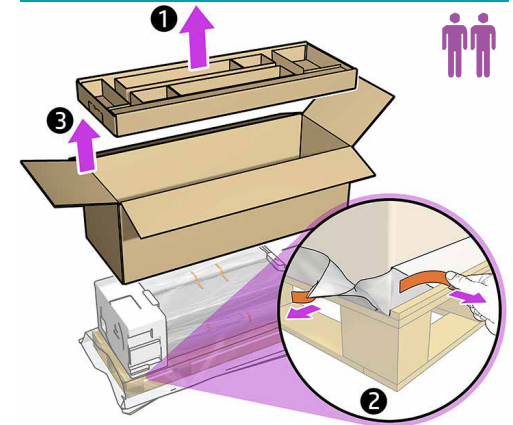
27



Fix the top cross-beam (J) to the stand with four black screws on the left and right side.

Attach the printer body to the stand assembly

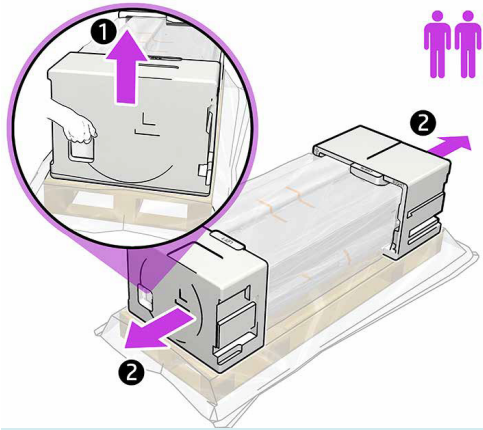
28



Important: Two people are required.

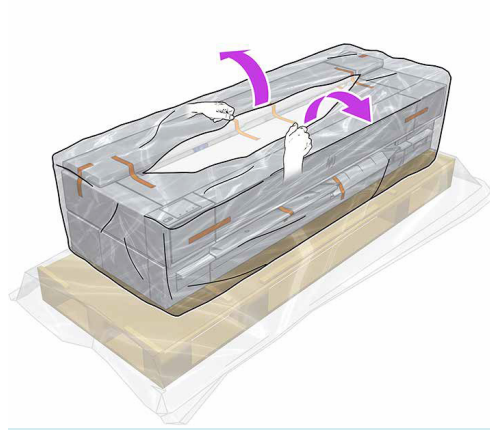
Remove box 1. Open and remove the box (2) by lifting the box upward (3).

29



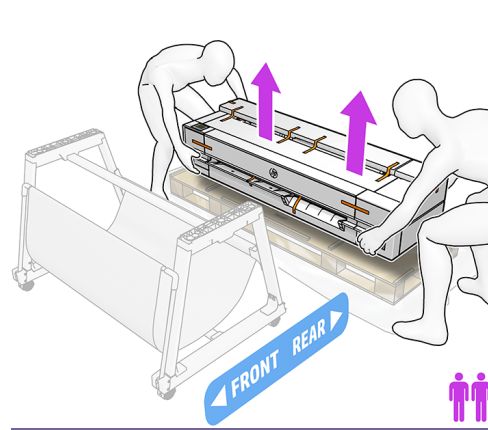
Remove the tapes from the encaps. Pull the endcaps up a little (1) and remove them (2).

30



Uncover the printer by tearing open and pulling down the bag.

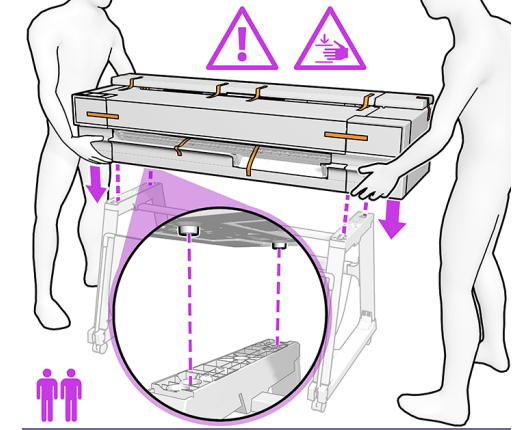
31



Important: Two people are required.

Move the stand close to the printer, then with two people, lift the printer body by holding the base.

32

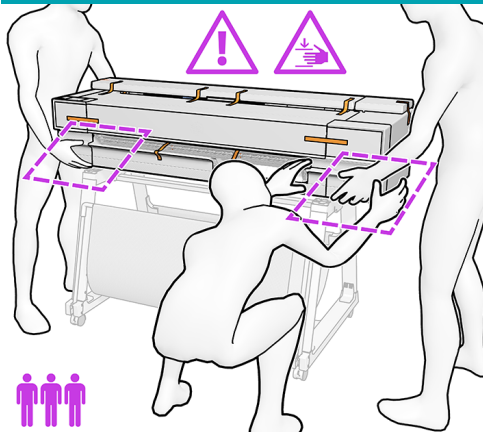


Important: Two people are required.

Caution: Take care not to catch your fingers.

Lower the printer into position onto the top cross-beam of the stand.

33

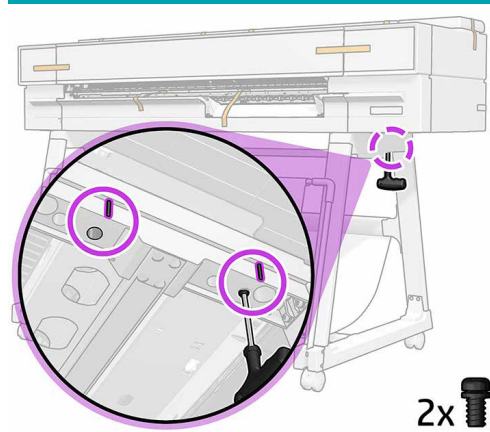


Important: Three people are required.

Caution: Take care not to catch your fingers.

Use a third person to adjust the stand position and guide the printer into the correct position.

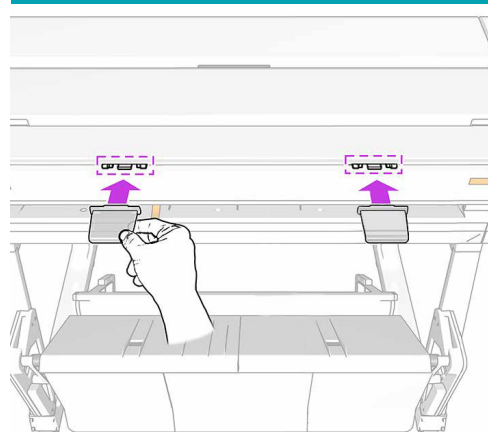
34



From underneath, fix both sides of the printer to the stand with two black screws.

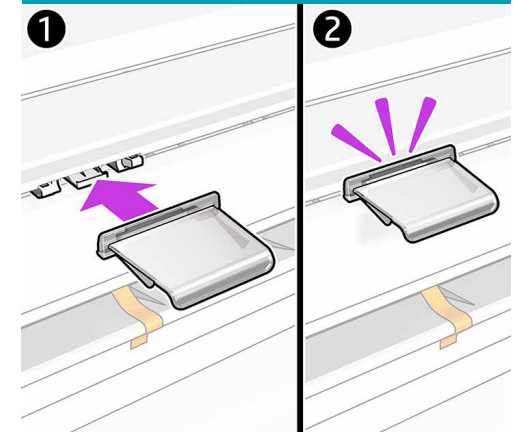
Note: The vertical bars on the outside of the crossbeam indicate the holes where the screws should be inserted.

35



Locate the two refeed preventer mounts under the scanner label.

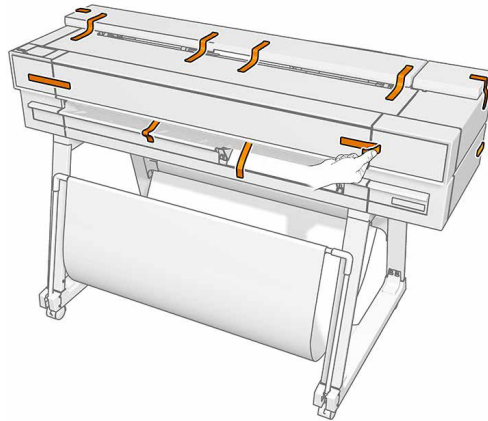
36



Click the two refeed preventers into position on the mounts.

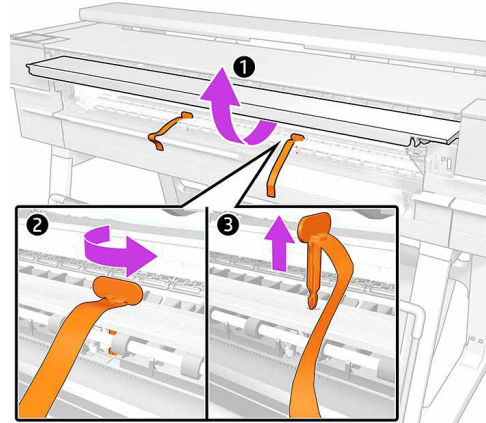
Remove printer packaging

37



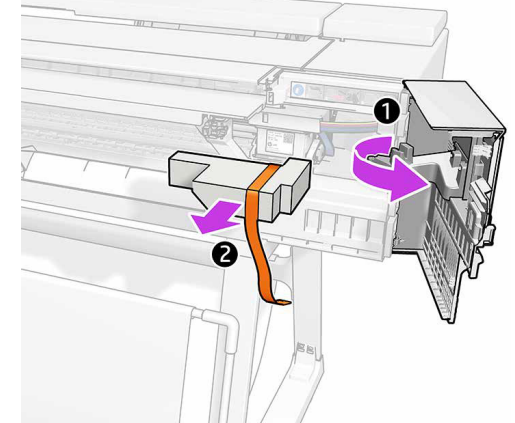
Remove the orange tape from the top and front of the printer.

38



Open the main door. Carefully, rotate and remove the two pins from inside of the printer.

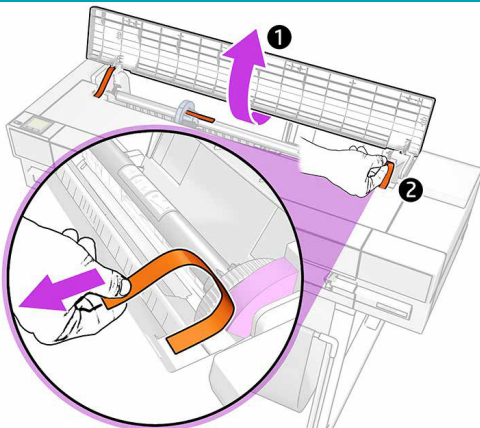
39



Open the printhead carriage door and remove the foam. Close the door when finished.

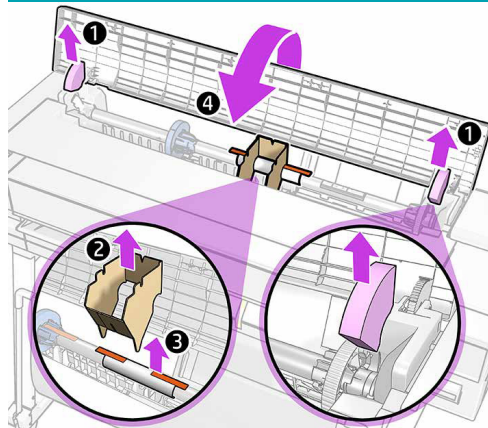
Note: For more information about how to refill the inks, please refer to the **User's Guide**.

40



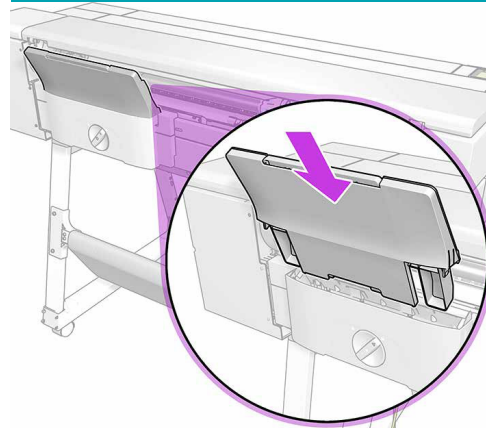
Open the roll cover and remove the two spindle tapes.

41



Remove the retainers and cardboard. Close the roll cover.

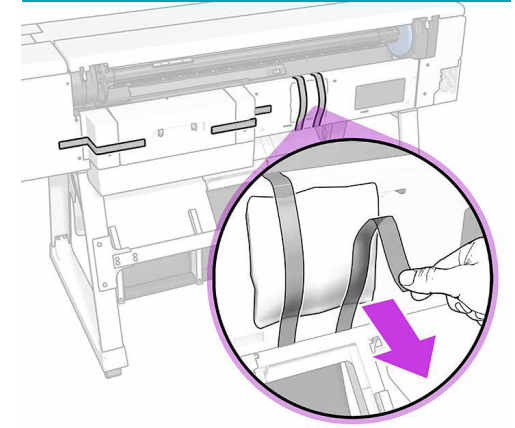
42



Install the tray.

Note: Make sure to twist the lock to the right to lock the tray into place.

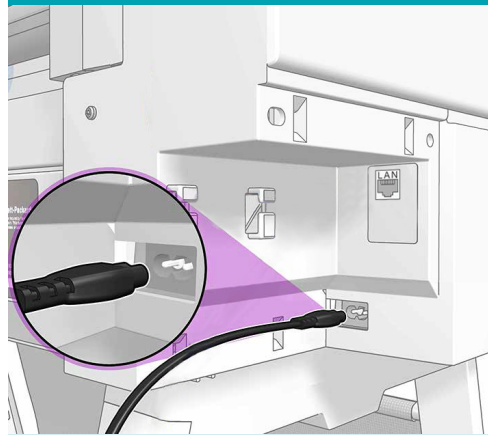
43



Remove the tapes and desiccant bag from the back of the printer.

Set up the printer

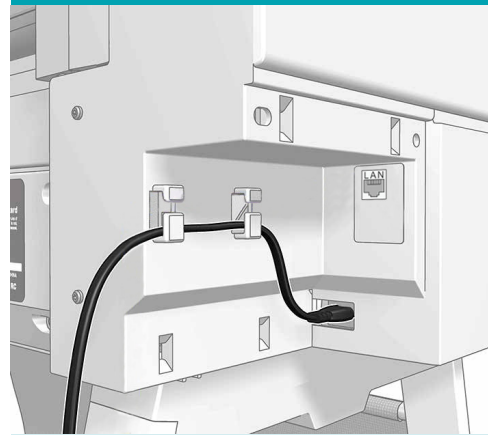
44



Connect the power cable.

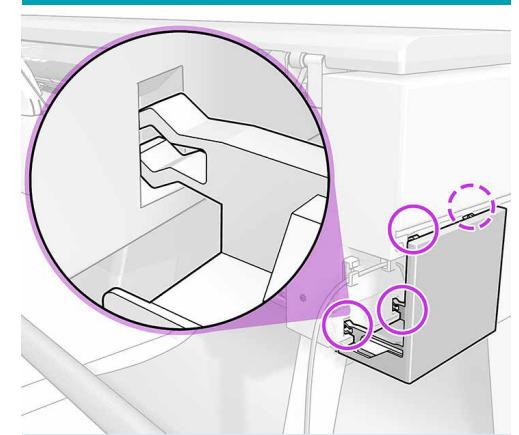
Note: If you prefer to connect via Wi-Fi Direct (recommended), there is no need to connect the LAN Cable. LAN cable is not included. Please reference the **Quick Start Guide** included with the printer for additional connection information.

45



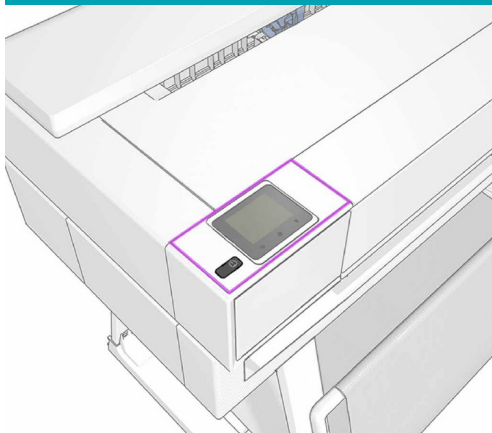
Route the power cable through the cable clips.

46



Install the cable cover.

47



Note: Make sure all the covers are closed before powering on the printer.

Once all the cables are connected, check that the printer is on. The control panel will now guide you through setup.

DON'T FORGET
to attach the
Maintenance Reminder
Tag to your power cable!



Wrap the adhesive tag around the power cable of your Perfecta® Q36 and save the instruction card for important maintenance tips and reminders to help prolong the life of your printer.

Technical Support

For technical assistance, please contact your Authorized VariQuest® Dealer or the VariQuest Technical Support Team:

- **Email:** tech_support@variquest.com
- **Phone:** 1-800-328-0585

Additional information can be found in the *Perfecta® Q36 Quick Start & Installation Guide* or the *User's Guide* located at resources.variquest.com.

Y2901175 05/2024
©2024 Varitronics, LLC. All rights reserved.